

FOCUS



AUGUST/SEPTEMBER 2025

EATON BRAY • EDLESBOROUGH • NORTHALL • DAGNALL

Photo by Eileen Bennett



Lunch , Evening Meals & Takeaways

Childrens Sandpit • Outdoor Seating



Call us to book on:
01442 843020

Order a takeaway on:
01442 842277
(delivery available to the villages)

Bespoke menus available | Vegetarian, vegan & gluten-free options available

Looking to visit the USA...

For help with creating the best itinerary for you please call or email us

- We work with specialist companies to tailor-make the holiday to your requirements
- Friendly, honest advice from an independent travel agency
- Extensive experience to arrange every detail
- Using fully bonded tour operators
- No booking fees



Travel Impressions

01442 890265

enquiries@travelimpressions.co.uk
www.travelimpressions.co.uk

Suite 4, George House, 64 High Street, Tring, Herts. HP23 4AF

THE FOCUS MAGAZINE COMMITTEE

EDITOR: **Sally Siddons** 01525 221733

34 Wallace Drive, Eaton Bray, Email: sallysid@hotmail.com

BUSINESS ADVERTISING: **Sally Taylor** 01525 221576 and **Sue Tucker** 01525 223004

Email: advertising@thefocusmagazine.co.uk

CHAIR: **Ken Coates** 01525 220868

10 The Nurseries, Eaton Bray,

CIRCULATION MANAGER: **Martin Hayden** 07796 335 661

TREASURER: **Martin Hayden**

Email: treasurer@stmaryseatonbray.org

KINDLY NOTE

Articles and events for publication must be submitted to the Editor by the 10th of the preceding month. August/September and December/January are joint issues and articles must be submitted by 10th July and 10th November respectively. If an event falls in the first week of the month, it is advisable to submit the details into Focus a month earlier. The magazines are not delivered from the printers until the first of the month and it takes a few days for them all to be circulated throughout the villages by our volunteer distributors. ✍ Editor

Focus accepts no responsibility as to the accuracy or content of any advertising or articles published in 'this' magazine, neither do they reflect the opinion of members of the Committee.

© Articles published in Focus may not be reproduced without permission.

DEFIBRILLATOR LOCATIONS

These units are registered with the Ambulance Services. To access them, please phone 999. You will be given the access code and the location of the unit will be confirmed. The defibrillator is easy and safe to use.

The units can be found on the outside walls of the following locations:

DAGNALL: Red Lion Public House & Munns Farm Shop

EATON BRAY: The Coffee Tavern

NORTHALL: The Swan Public House

EDLESBOROUGH: Edlesborough Memorial Hall, Baptist Church & Summerleys



EDLESBOROUGH SURGERY

01525 221630 www.edlesboroughsurgery.co.uk



The paper used for this magazine is sourced from sustainable forests and can be recycled



Focus is online at www.thefocusmagazine.co.uk

Village Info



EDAN COMMUNITY CAR SERVICE

CO-ORDINATOR: **Peter Williams** 01442 842506
Email: peterw500@aol.com



POLICE CONTACT DETAILS

GENERAL ASSISTANCE (RECOMMENDED NUMBER): 101 **EMERGENCY:** 999
TEXTPHONE SERVICE: 18001 101

BEDFORDSHIRE POLICE: (EATON BRAY)

T/Sgt 6268 Amy Ison Leighton Buzzard Community Policing Team
Duncombe Drive, Leighton Buzzard **TELEPHONE:** 01582 473408

THAMES VALLEY POLICE (EDLESBOROUGH, DAGNALL & NORTHALL)

PCSO Mike Coker Email: WingNHPT@thamesvalley.police.uk

TO REPORT NON URGENT CRIME: www.thamesvalley.police.uk

BOOKING CONTACTS

NORTHALL VILLAGE HALL: Lorna Cubbage 07857 318696

Email: northallvhbookings@gmail.com Website: www.edlesborough-pc.gov.uk/nvh

EATON BRAY VILLAGE HALL: Norman Lee 07975 797202 & **Jane Taylor** 07852 586045

Email: northallvhbookings@gmail.com Website: www.ebvvh.co.uk

COFFEE TAVERN: Julie Mahoney 07836 240467

Website: <https://eatonbray.com/coffee-tavern/>

DAGNALL VILLAGE HALL: Bev Way 07875 462128 & **Trish Owen** 07762 151364

Email: DVH_Bookings@outlook.com

EDLESBOROUGH MEMORIAL HALL: Penny Pataky 01525 229358

Email: manager@edlesborough-pc.gov.uk

EDLESBOROUGH PAVILION: 07836 240467

Email: booking@edthepav.org Website: <https://edthepav.org.uk/>

PARISH COUNCIL CONTACTS

EATON BRAY PARISH COUNCIL: 07931 479663

Email: clerk@eatonbrayparishcouncil.gov.uk Website: www.eatonbrayparishcouncil.gov.uk

EDLESBOROUGH PARISH COUNCIL (including Dagnall & Northall): 01525 229358

Email: clerk@edlesborough-pc.gov.uk Website: www.edlesborough-pc.gov.uk

EATON BRAY GOOD NEIGHBOURS HELPLINE 07930 987064



MANNED PHONE HOURS: 9am to 5pm, Monday to Friday.

(An answering service is available for out-of-hours calls). Call us if you want help getting to the surgery/hospital and collecting prescriptions.

We help people of Eaton Bray, Edlesborough, Northall and Totternhoe.

Contents

The Focus Magazine Committee	3	St Mary's Church Eco Garden	45
Village Info	4	Advice and Insights for Kids in the Game	48
Pavilion Cancer Support Group	5	Eaton Bray Cricket Club	49
Village Diary	6	We Need Some Help!	52
Eaton Bray with Edlesborough Parish News	8	Book Reviews	52
Northall Baptist Chapel Services	9	Summer Vibes	53
St Mary's Church, Eaton Bray Services	9	Braised Pork with Plums	56
Dagnall Church Services	9	Dunstable Probus Club	56
Repair Cafe	10	Birds of Bray	56
St. Mary's Book Swap	12	Danesborough Chorus	57
A New Chapter for Eaton Bray Methodist	13	Totternhoe Garden Club	60
Edlesborough Parish Council News	16	Edlesborough W.I.	61
World's Biggest Coffee Morning	17	Pavilion IT Support Group	61
A Wonderful EdleFest Weekend	20	Helpful Tips on Finance	61
Free to Expore at Heritage Open Days	21	Your Local Rotary Club Wants You	64
Eaton Bray Parish Council	24	Harvest Festival Auction	64
Dagnall Weather Station (AONB)	28	Eaton Bray WI	65
Northall Baptist Church	29	Appledown Rescue Dog of the Month	65
Eaton Bray Good Neighbours	32	What to do in the Garden in August	68
Dagnall Community Choir	33	How Safe is your Luggage	70
Carnival Tea Tent	35	A Farewell Service for Nigel Bibbings	71
Edlesborough Carnival	36	Hymns of Praise on Edlesborough Green	71
Best Dressed House and Business	38	Eaton Bray TC Summer Tennis Camp	72
Wednesday Club	40	Advertiser Index	73
Biggest cycling events in the South East	41	Salvation Army Activities	74
Swallows: our Summer visitors	42		
Eaton Bray Academy Mini Marathon	44		

Pavilion Cancer Support Group

This group meets in Edlesborough Pavilion on the first Thursday of each month from 2.30 pm. A get together to meet and share friendship, information and mutual support. There will also be speakers and medical professionals to address members' questions and requests.

We grateful to the Pavilion Trustees and the Burghope Trust for their support. No need

to book just come along to the pavilion. Upcoming sessions will include speakers talking about all aspects of living with a cancer diagnosis and treatments.

In August our will be Sue Lawrence a specialist lymphodema nurse and our September speaker will be Dr.Nabeel.

**NO ONE
SHOULD FACE
CANCER
ALONE**

WEEKLY

Mon-Sun	St. Mary's Edlesborough opening times are limited - Please see notice board and website
Mon-Sun	Pavilion Gym Mon-Frid 6:30am to 9:30pm Sat/Sun 8am-8pm Email Gym@edthepav.org.uk
Mon-Sun	Pavilion open for members. M-T 6:30am-9pm, F 6:30am-10pm, S/S 8am-8pm Email: General.enquiries@edthepav.org.uk
Mon-Fri*	Eaton Bray Pre-school Eaton Bray Lower School, 01525 220468, admin@eba.ec
Mon-Fri*	Edlesborough Primary Academy Pre-School 01525 220431, epamanager@epa-primary.org
Mon-Fri*	Totternhoe Pre-school Totternhoe CE Acad 01582 662959 totternhoeoffice@tot.dsamat.co.uk
Mon	Pilates 10.45am, Totternhoe Memorial Hall, Lisa: 07832 230774
Mon	Dagnall Community Choir , All Saints Church 7.45-9.45pm, w.dagnall-community-choir.co.uk
Mon*	Movement and exercise classes with a dance flavour, Northall VH 2-3.30. Jan 01442 864271.
Mon	Cubs (8-10 ½ yrs old), 6.30pm - 8pm, 1st Eaton Bray & Edlesborough Scout Hut, High Street, Edlesborough. Contact Liz Coates 01442 842550
Mon	Yoga 6:45pm, Edlesborough Memorial Hall, contact 07837 727302
Mon	Barre 8pm, Edlesborough Memorial Hall, contact 07837 727302
Mon	Eaton Bray Tennis Club 4-7pm mini / junior tennis coaching
Mon	Eaton Bray Tennis Club 7-8pm Adult Coaching 'Get Back Into Tennis'
Tues	Pilates 10-11am, Eaton Bray Village Hall, Nicky Roussou 07861 162680
Tues*	Totternhoe Baby & Toddler Group 9.30- 11.15am, St. Giles Church Hall
Tues	Tap & Ballet Classes JoAnn Latus School of Dance, 4-8pm, Eaton Bray VH, 07800 518654
Tues**	Coffee Morning Bring & Buy, Table Top Sale, 10-11:30am, Salvation Army Hall, Booth Place, EB
Tues	Jazzercise 9:15-10:15, Eaton Bray Village Hall, Beth 07539 739136
Tues	Eaton Bray Tennis Club 6-7.30pm Social play for all adults
Tues	Berkhamsted Taekwon-do Kids 5.45pm- 6.30pm, Dagnall Village Hall, 07813 755785

Tues	Berkhamsted Taekwon-do Adults 6.30pm, Dagnall Village Hall, 07813 755785
Tues	Movement is Medicine Pilates 1:30-2:30pm, Billington Hall, moira@stjudesclinic.com
Wed	Pilates 8pm, Northall Village Hall, Lisa: 07832 230774
Wed	Northall & Dist Age Concern Wed Club 10am- 3pm, Northall Village Hall, Dee 07854 230243
Wed	Art Course online 9.30 - 11.30am, contact Lorna Moore 07896 619660
Wed	Art Course Bellows Mill Eaton Bray, 2-4.30pm, contact Lorna Moore 07896 619660
Wed	Pilates 6-7pm, Eaton Bray V.Hall, Heather Holmes 07305 023077 pilateswithheather@mail.com
Wed	Movement is Medicine Pilates 7-8pm & 8:05- 9:05pm Billington Hall moira@stjudesclinic.com
Wed*	Stay & Play toddler group 'Musical Monkeys' Eaton Bray Village Hall, 10am 07944 891235
Wed	Knit and Natter 12-2pm Edlesborough Pavilion Di Hedges 07794 075269
Wed	Lunch Menu at The Pavilion Email ecstrading@edthepav.org.uk
Thur	KFPA Street dance classes Edlesborough Memorial Hall 4.15pm-6.30pm (4 years+) Contact Kiri 07988161043 or visit Facebook page 'KF PerformingArts/ KFPA' for info
Thur	Berkhamsted Taekwon-do Adults 6.30pm, Dagnall Village Hall, 07813 755785
Thur	Beavers (6 to 8 years old), 6.15-7.30pm, 1st Eaton Bray & Edlesborough Scout Hut, High Street, Edlesborough. Contact: ebebeaverleader@ebescouts.co.uk
Thur	Explorers Scouts (14-18 years old), 8pm- 9.30pm, 1st Eaton Bray & Edlesborough Scout Hut, High Street, Edlesborough. Contact Simon Betts, simon_betts@hotmail.com
Thur	Jazzercise 18:30-19:00 and 19:00-19:45, Eaton Bray VH, Beth 07539 739136
Thur	Retro Line Dance Class 11.15am to 12.45pm. Eaton Bray Village Hall. Beginners welcome. www.jukeboxjunction.co.uk info@jukeboxjunction.co.uk 07864 212171
Thur	Adult Board Games 12-2:30pm, Pavilion 07740 197392 Email Stevemunday1@gmail.com
Thur*	Move Better, Feel Better Pilates 10-11am, Edlesborough Memorial Hall

Contact Lesley Pickering, 07767 823202,
lesley@lesleypickering.com

Thur	Lunch Menu at The Pavilion Email ecstrading@edthepav.org.uk
Fri	Tap & Ballet Classes JoAnn Latus School of Dance, 4-8pm, Eaton Bray VH, 07800 518654
Fri	Jazzercise 9:15-10:15, Eaton Bray VH, Beth 07539 739136
Fri	Scouts (10½ to 14 years old), 7.00-8.30pm, 1st Eaton Bray & Edlesborough Scout Hut, High Street, Edlesborough. Contact Mark Owen, ebescoutleader@ebescouts.co.uk , 07899 892344
Fri	"Little Luvvies" baby ballet classes 10am-11.30am, Northall Village Hall. Contact Emma Whittemore on 01525 376124
Fri	Movement is Medicine Pilates 10-11am Great Gaddesdon Parish Hall, moira@stjudesclinic.com
Fri	Food evening at The Pavilion Email ecstrading@edthepav.org.uk
Sat	Jazzercise 9-10am, Eaton Bray VH, Beth 07539 739136
Sat	KFPA Musical theatre classes Edlesborough Memorial Hall 9.30-10.30am (4years+) Contact Kiri 07988161043 or visit Facebook page 'KF PerformingArts/ KFPA' for info
Sun	Sunday Worship at 11am Edlesborough Baptist Church, Moor End, LU6 2FL. Contact: 01525 222064 or edlesboroughbaptistchurch@gmail.com
Sun	Karate for kids & adults 3-4:15pm & 4:30-5:45pm, Eaton Bray VH, Contact 07500 007779
Sun	Eaton Bray Tennis Club 10am -12pm Social play for all adults

MONTHLY

1st Mon	Eaton Bray Parish Council Meeting 7.30pm, The Coffee Tavern (except Jan-2nd Monday)
1st Mon	Eaton Bray W.I. 7.30pm. Eaton Bray Methodist Church Hall. Margaret Jones on 07478 061156
1st Tues	Sewing Class 7-9pm, Edlesborough Pavilion, General.enquiries@edthepav.org.uk
1st Tues	Jewellery Making 7-9pm, Edlesborough Pavilion General.enquiries@edthepav.org.uk (Dates can vary)
1st Tues	Dunstable & District Orbit (social & charitable) Club Dunstable Rugby Club, 8pm. 01525 222441

1st Wed*	Messy Church 6-7:15pm, Salvation Army, Booth Place, Eaton Bray, LU6 2DR
1st Thur	Pavilion Cancer Support Group from 2.30 pm in Edlesborough Pavilion.
1st Sat	St. Mary's Church Eaton Bray Coffee Morning, 10:30am - 12 noon (July held on 2nd Saturday)
1st Sat	Book Swap at St Mary's Eaton Bray, 10:30am - 12 noon (July held on 2nd Saturday)
2nd Mon	Film Society Sept to June, 2pm, Eaton Bray Village Hall, Graham Chappell 07980 321977
2nd Tues	Dunstable & District Local History Society meeting, 7.45pm, Methodist Church Hall, Dunstable
2nd Tues	Edlesborough W.I. 7.30 pm, Edlesborough Memorial Hall. Contact Jackie Flint 01525 221618
2ND TUES & Thur	Adult board games club 7-9:30pm, Edlesborough Pavilion, 07740 197392, email Stevemunday1@gmail.com , Edlesborough Pavilion members, guests and new enquirer's welcome
2nd Thur	Sewing Class 10:30am -12:30pm, Edlesborough Pavilion, General.enquiries@edthepav.org.uk
2nd Fri	Leukaemia Research Coffee Morning 2 Dunstable Road, Dagnall 10.30 a.m. all welcome. No meeting in September, June plant bring and buy, December Sherry & mince pies
3rd Thur	Edlesborough Parish Council Meeting 7.30pm, Edlesborough Pavilion or as stated in Edlesborough Parish Council News
3rd Sat	Junior board games club Edlesborough Pavilion, General.enquiries@edthepav.org.uk (dates can vary)
3rd Sun	Lunch club 11.30 to 2.00pm, Eaton Bray Village Hall, Chris Hewitt 222288
4th Wed	Book club 7-10pm General.enquiries@edthepav.org.uk (dates can vary)
Last Sat	Coffee Morning 10:00-12 noon, Edlesborough Methodist Church

EATON BRAY WITH EDLESBOROUGH ~ PARISH NEWS ~

Vicar: Rev'd Joy Cousins

The Vicarage, 11 High Street, Eaton Bray - Tel: 01525 220261

Associate Priest: Rev'd Stephen Burge

Church Warden & Pastoral Matters: Catherine Hayden (01525 220527)

Reader: Gordon Gray (01525 220136)

Website: www.stmaryseatonbray.org.uk Facebook: St Mary's Eaton Bray

Although it's still summer, my diary is already filling up for the autumn. One of the events which I am very much looking forward to is the North Chilterns Group 'Talking Point' at 7.30pm on Wednesday 22nd October at St Mary's Eaton Bray. The subject is one which is highly significant to us all: 'Living as a human in an AI world.' Artificial Intelligence is set to change our world profoundly. The impact of AI has been compared to that of the Industrial Revolution. What will be the ethical and societal implications of this breakthrough new technology? UNESCO has produced a set of Recommendations on the Ethics of Artificial Intelligence. Some of the ethical dilemmas posed by AI are addressed on their website. These include examples of gender bias in artificial intelligence, including in algorithms and search-engine technology. The use of AI in judicial systems around the world is increasing. There are many ethical challenges concerning fairness and Human Rights. Another area of controversy is the use of AI in the arts. And then there are so-called driverless cars. What kind of moral decisions would an autonomous car make in relation to pedestrians, for example? I am concerned about the impact of AI. I want to know about safeguards, unintended consequences and how we can preserve our uniqueness as human beings with such technology unleashed.

'Talking Point' will be an opportunity to explore the many issues, positive and negative, which arise from the adoption of AI. We will be expertly guided through the subject by our speaker, the Revd Canon Dr Tim Bull. As that impressive array of titles suggests, Tim has held a range of roles over his varied career. He is currently an Anglican

Priest serving at St Albans Cathedral and as the Diocesan Director of Ordinands for the diocese of St Albans. That means he is the leader of a team responsible for the discernment and selection of future clergy. Tim has previously been a member of the Lee Abbey Community in Devon, a Christian community which runs retreats, holidays and conferences. He was also a country vicar for 10 years in Chelmsford Diocese.

Prior to ordination, Tim gained a PhD from Durham University in software engineering. He worked as a chartered software engineer, and a university lecturer in computer science. Tim is a member of the Society of Ordained Scientists and a Fellow of the Royal Society of the Arts. He heads up the national leadership development programme for disabled and neurodivergent clergy and laity. His interests include faith responses to fake news and disinformation, and the interface between theology and Artificial Intelligence – a topic on which he has spoken widely. He is a founder member of the AI Christian Partnership.

Tim will be our guest speaker at 'Talking Point'. He will share his experience of AI and its implications, and then there will be the opportunity to ask questions. I'm sure many of us already have questions we would like to bring to an expert. I hope you will be able to come along to St Mary's for what promises to be an illuminating and informative evening.

With every blessing,
Joy, Vicar of Eaton Bray with
Edlesborough

Rev'd Joy Cousins



NORTHALL BAPTIST CHAPEL

CHAPEL LANE, NORTHALL

(just beyond the 30 speed limit signs on the road towards Leighton Buzzard)

Everyone is welcome to our Sunday worship each week between 11am and 12.30pm including tea/coffee and time to talk together.

For more information contact: **John Hazell 01525 218142**

Email: **northallchapel@btinternet.com**

Website: **www.northallbaptistchurch.org**

There has been a Baptist Chapel in Northall for more than 200 years. Today we continue to seek to worship God, serve him in our daily lives and support and encourage one another in the difficult and the joyful times.



SERVICES at ST. MARY'S CHURCH, Eaton Bray

SUNDAYS: 10am PARISH HOLY COMMUNION (apart from the third Sunday – see below)

On the **FIRST** and **THIRD SUNDAYS** of each month there is **HOLY COMMUNION** at **8am**

On the **THIRD SUNDAY** of each month there is **CAFE CHURCH** at **10am**, an informal service with coffee and croissants

WEEKDAYS: WEDNESDAY at **10am HOLY COMMUNION**

EVERYONE IS WELCOME AT THESE SERVICES

Details and **ONLINE WORSHIP: www.stmaryseatonbray.org.uk**



ALL SAINTS' CHURCH, DAGNALL AUGUST AND SEPTEMBER 2025

SUNDAY 17TH AUGUST 10.30AM

HOLY COMMUNION

SUNDAY 21ST SEPTEMBER 10.30AM

HARVEST FESTIVAL WITH HOLY COMMUNION

FOR ANY QUERIES PLEASE CONTACT

PHILIP LEE ON 07977 234453 OR DOROTHY GREEN ON 01442 843237



Livinghoe & Pitstone Repair Café



ivinghoepitstonerepaircafe.co.uk



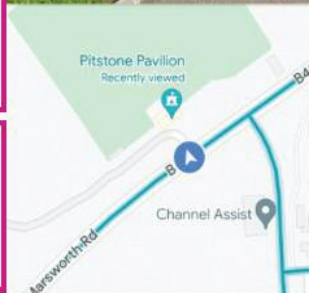
WHERE TO
FIND US!!

Pitstone Pavilion

27th September

09.30 – 12.30 ➡

What's the Repair
Café all about?



It's so easy! Bring along anything you need fixing, and we will repair it for you while you sit and enjoy hot drinks and homemade snacks from our café area. *We just ask for a Donation!*

Our Repair Café is run by volunteers with expertise in: All electrical items, mobile phones, tablets, clothing/fabrics with rips & holes, jewellery, clocks, lights, machinery, tools, furniture, bikes and more!



@ivinghoepitstonerepaircafe



Ivinghoe & Pitstone Repair Café



ivinghoerepaircafe@gmail.com



UNICORN

WINDOWS LTD

UNIT 3 YOUNGS INDUSTRIAL ESTATE
STANBRIDGE ROAD, LEIGHTON BUZZARD
BEDS LU7 4QB



YOUR LOCAL HOME IMPROVERS

<ul style="list-style-type: none"> ✓ DOORS; COMPOSITE, ALI AND UPVC ✓ CONSERVATORIES ✓ ORANGARIES AND GLAZED EXTENSIONS ✓ CAT FLAPS/DOG FLAPS ✓ BIFOLD DOORS ✓ PORCHES ✓ CLADDING ✓ REPAIRS - INCLUDING REPLACEMENT GLASS 	<ul style="list-style-type: none"> ✓ WINDOWS; UPVC AND ALUMINIUM ✓ SOLID ROOF/ROOF CONVERSIONS ✓ CONSERVATORY REFURBISHMENTS ✓ SOFFITS, FASCIAS AND GUTTERING ✓ LANTERN ROOFS AND SKYPODS ✓ FLUSH SASH WINDOWS ✓ SLIDING DOORS ✓ AND MORE...
---------------------------------------------------------------------------------------------------------------------------------------------------------------------------------------------------------------------------------------------------------------------------------------------------------	----------------------------------------------------------------------------------------------------------------------------------------------------------------------------------------------------------------------------------------------------------------------------------------------------------------------------



**10
YEAR
WARRANTY**







CONTACT US

FOR MORE INFO OR TO ARRANGE YOUR FREE, NO OBLIGATION QUOTE

01525 854272

sales@unicornwindows.co.uk








Aspley flooring

- Karndean Vinyl
- Real Wood
- Carpet
- Underfloor Heating






Quality flooring and installation at affordable prices



T: 01908 477 809 M: 07977 575 010 aspleyflooring.co.uk



Take a book you want to read - Leave a book you want to share

The Book Swap continues to do well. Please come along to browse our book shelf and enjoy coffee and cake in the church.

Future Book Swap dates at St Mary's Church

August 2nd 10.30 – 12.00

September 6th 10.30 – 12.00

We are only accepting novels in good condition and we asking that you only bring them when the Book Swap is open. Please note we are not accepting cookery books and factual books or any large amounts of books.

For more information about Book Swap please contact:

Chris Sanders Email: chris.sanders45@gmail.com

Jenifer MacKenzie Email: jenimackenzie@hotmail.com



THE COFFEE TAVERN

Eaton Bray

Large Hall/1st Floor	£12.50/hour
Committee Room/Ground Floor	£6.50/hour
Large Hall & Committee Room	£18.00/hour
Office / Ground Floor	£6.50/hour
Free WiFi, Kitchen, Disabled Toilets & Access Ramp	

For bookings please call **07836 240467**
or the Parish Clerk on **07931 479663**

www.eatonbrayparishcouncil.gov.uk/the-coffee-tavern/



DAGNALL VILLAGE HALL

Our beautiful village hall is now available for hire,
all day, every day!

Competitive rates. Disabled access, 2 halls, stage,
car park, kitchen, enclosed outside area, wi-fi, Bluetooth PA.

Please contact us for any enquiries!

DVH_bookings@outlook.com

07875 462128 / 07762 151364

Parties, receptions, art classes, yoga, meetings,
dance, theatre, sports events, food sales, craft fairs, exercise
classes, friendship groups, we welcome you all – and more!

A New Chapter for Eaton Bray Methodist - and an Introduction!

by Rev Tim Haines

Hello! I'm **Rev Tim Haines** and from September I'll be joining friends at Eaton Bray Methodist Church for a year as they prepare to leave their building and explore what it means to be more present in the life of the local community.

Hopefully, by the time you're reading this, I'll have already met some of you at the brilliant **St Mary's Village Carnival** in July – I've heard great things and am looking forward to soaking up the atmosphere (and maybe some cake too!).

I'm currently working in Houghton Regis with an ecumenical community charity partnered with the South Bedfordshire Methodist Circuit. A lot of what I do is about connecting people, listening to local hopes and concerns, and helping build communities where everyone feels they belong. I'm passionate about faith that gets its hands dirty – the kind that shows up not just on Sundays but in real life, among real people, in all the ups and downs.

The coming year will be a big one for the Methodist church at Eaton Bray. After many years worshipping in their building, they've taken the bold decision to let it go and focus instead on being church out and about – in homes, cafes, pubs, community halls, and wherever people gather. It's a huge change, but also a really exciting one.

Of course, the building holds a lot of memories and meaning for many people, and we want to honour that. So on the **afternoon of Sunday 28th September**, we'll be holding a special **final service of thanksgiving** in the church building – a chance to celebrate, reminisce, give thanks, and look ahead with hope. Whether the church has been part of your life or you're just curious, you'd be really welcome to come and celebrate this moment with us. It'll be informal, warm, and open to all.

As I've been preparing for the year ahead, a verse from the Bible keeps coming to mind: *"See, I am doing a new thing! Now it springs up; do you not perceive it?"* (Isaiah 43:19). It's a reminder that even in times of change and uncertainty, God is already at work – gently calling us into new life, new connections, and new hope.

I'll be supporting the church through this transition and getting involved in community life wherever I can. If you see me around (probably with a coffee in hand), do say hello – I'd love to get to know you, hear a bit of your story, and see how we can continue to bless and serve this wonderful part of the world together.



Problem Solving:

Virus & Spyware Removal
Internet & Email Assistance
Fault Diagnostics
Repairs & Upgrades
Slow Running PC's

Services:

PC & Mac Support
Wired & Wireless Networks
Data Recovery
Install & Set-up
Health Checks

On-site Visits:

Office Hours &
Evenings - by appointment

Sales:

Desktops, Laptops & Tablets
Printers & Peripherals
Software

For friendly advice call John Wallace

07968 536068 or 01525 261381

Email: john@computamtion.co.uk

Web: www.computamtion.co.uk

9a Lower Way, Great Brickhill, Buckinghamshire. MK17 9AG

**Computamtion
Services Ltd
Established. 1999**

"Excellent
experience.
I nearly fell
asleep whilst
having my fillings
done!

Very reassuring
- no rush.

I was made to
feel completely
at ease.

Thank you!"
- R.R.



Floss and Smile Dental Practice
Edlesborough/Eaton Bray

Telephone: 01525 223175
Tring Road/Harling Road Roundabout
Eaton Bray, LU6 2LA

www.flossandsmile.co.uk



General Family Dentistry * Implants * Crowns * Bridges * Dentures * Hygienist *
Smile Makeovers * Tooth Whitening * Straight Teeth *
0% Finance

Dr Alpa Johar (GDC 111350) & Associates

"Without doubt
the most
competent,
gentle & lovely
dentist in the
Northern
hemisphere! I
won't see
anyone else.
Thank you from
a nervous
patient."
- M.B.



M J Broughton

- ✓ High Quality Painting & Decorating
- ✓ Fully Insured
- ✓ Local and trusted for over 30 years

Over
30
Years Experience

Telephone or email
for a free estimate.

📞 01525 222 764
📠 07768 766 859
✉ maxbro@btinternet.com



Anne Johnson Osteopath
6 Moor End, Eaton Bray

Back, neck and joint pain

Postural tension and headaches

Arthritic and other muscle and joint problems

07957 250682

Book by phone or online

www.anne-johnson.net

DEEP CLEAN

Simply the BEST Carpet & Upholstery cleaning you can get!

OUR SERVICES INCLUDE:

- Pre-treatment
- Hot water extraction
- Stain removal
- Pet odour elimination
- Residential, Commercial and Industrial carpet & upholstery cleaning



COVERING HEARTS, BEDS & BUCKS



**Now offering
Gutter
Vacuuming,
Fascia & Soffit
cleaning!**

Contact Darren for a FREE Quotation

01525 851 811 www.deep-cleaners.co.uk
07790 034818 sales@deep-cleaners.co.uk

N.D.S.

General Building and Plumbing

Kitchens and Bathrooms:-

Design + Supply or just Installation

All aspects of building work and
property maintenance undertaken

Can also replace steamed up/misty

Double Glazing

Please call Neil Scott:-

07946 626 564 / 01525 221470

For Free Estimate. All work considered

No job too small

(30+ Years Experience)



Patricia's Cuisine

Catering For All Occasions
Based in Eaton Bray

- Buffets, Dinners •
- Christenings, Weddings, Funerals •
- Promotions & Business Lunches •

For Enquiries & Menu

Email: enquiries@patriciascuisine.co.uk

Tel: 01525 222174/07778 393971

www.patriciascuisine.co.uk



David John Harris

Green Fingers

(Established 1992)

All Fencing Work • All Gates • Paving • Patios
Driveways • Shingle • Hedge Setting and Cutting
Grass Cutting • Turfing Specialist • Exterior
Painting Service • Sheds Small Building Work
Trees & Shrubs Supplied

Tel/Fax: 01525 221745
Mobile: 07889 143713



EDLESBOROUGH PARISH COUNCIL NEWS

Including Edlesborough • Dagnall • Northall • 2025

Clerk: Miss Penny Pataky | Office Hours: Mon - Fri 10am – 2pm (exc Wed) | Email: clerk@edlesborough-pc.gov.uk
Website: www.edlesborough-pc.gov.uk | Facebook: www.facebook.com/EDANParishCouncil | 01525 229358

St Mary's Village Carnival

Thank you to all those who came to see us at the St Mary's Village Carnival. Well done to the Carnival committee, the stall holders, all those who participated in the procession and all those who attended to make the day such a success for the community.



Allotments

The annual allotment rent for 2025/26 is due to be paid at the start of October 2025. The rent due is £2.30 per pole.

EPC requests that payments are made by internet banking. Any tenants not able to pay by internet banking please contact the Clerk ASAP to discuss an alternative payment method.

Please ensure rent is paid by 11th October 2025, late payments will incur a £10 administration fee.

EPC currently holds a waiting list for all allotment sites, anyone wishing to be added to the waiting list should contact the Clerk.

Buckinghamshire Councillors

Copies of the latest reports from the Buckinghamshire Councillors can be viewed on the EPC website alongside the minutes of the EPC meetings.

EPC Surgery

If you have a question or suggestion for the Parish Council the Clerk will be available on the first Thursday of September, December, March and June in Edlesborough Pavilion from midday – 2pm. The surgeries have been reduced to once a quarter due to poor attendance.

Speedwatch & EDaN Traffic Management

Any parishioner interested in becoming involved with the EDaN Community Speedwatch for Edlesborough Parish should contact Mr Alan Williams via email at speedwatch@edlesborough-pc.gov.uk or on 07828 398371.

Ivinghoe Freight Strategy

EPC have been informed that there is an upcoming consultation



proposing to make changes to the zone's Traffic Regulation Order (TRO), subject to statutory consultation. The order will be adjusted to allow exemptions for 'local traffic and permit holders'. This change will facilitate permissions for use of the roads inside the zone by businesses based in the zone and by their supply chains. This will likely make use of a virtual 'white list' of operators and vehicles with a permitted reason for being there. It will provide a basis for enforcement, potentially using camera technology, under the Moving Traffic Offences (MTO) powers. The detail of the enforcement capability is to be worked on with MTO colleagues. Enforcement by MTO will be subject to prioritisation and approvals which may include any scheme and technology approval by the Secretary of State.

If the "white list" is approved parishioners are likely to see a small increase in HGVs using the B440.

Once EPC has more information this will be shared with parishioners.

Council Meetings

The next Edlesborough Parish Council Meetings will take place on:

- Thursday 18th September 2025 – in Edlesborough Pavilion
- Thursday 16th October 2025 – in Northall Village Hall

The meetings will commence at 7:30pm.

Parishioners are welcome to attend all Ordinary Parish Council meetings and may ask questions, raise issues, and give suggestions during the Open Forum before the formal start of the meeting. Council

requests that where possible questions, issues and suggestions are submitted in writing to the Clerk by the Tuesday preceding the meeting.

The agenda and full minutes of previous Parish Council meetings are available to view on the website or from the Parish Clerk.



Fundraising for

**MACMILLAN
CANCER SUPPORT**

WORLD'S BIGGEST COFFEE MORNING

COFFEE, CAKES AND MORE

**FRIDAY 26th
SEPTEMBER**

**HOSTED BY ST MARY'S CHURCH,
EATON BRAY**

10.00 TILL MIDDAY

EVERYONE WELCOME. PLEASE COME AND HELP THE
CHARITY TO PROVIDE SUPPORT TO PEOPLE WITH A
CANCER DIAGNOSIS AND THEIR FAMILIES IN THESE
CHALLENGING TIMES.

Dominic Woolcott

Painter & Decorator



- Internal & External
- Plastering & Coving
- Insurance Work
- 30 Years Experience
- Competitive Rates

**For a professional job call:
01525 229682 or 07747 042879**



NEIL HODSON ASSOCIATES

STRUCTURAL ENGINEERING | ARCHITECTURAL SERVICES

Comprehensive design service for Building and Construction

- Architectural & Structural Designs
- Extensions • Alterations • Loft Conversions • Defects and Repairs
- Planning Permission • Building Regulation Consents • Listed Building Consents

Village Based | Established 35 years

01525 222462 | 07845 950594

P. DYER ELECTRICAL

For all your Electrical & Testing & Inspection needs

- All Testing & Inspection
- CCTV Systems
- Electric Vehicle Charging
- Rewires
- Security Systems/Lighting
- Fuse Boards
- LED & Low Energy Lighting
- Fault Finding/Repairs

Fully insured, Part P registered, all work guaranteed.
Fast, friendly and reliable local electrician. For a free,
no-obligation estimate, call Paul on:

Tel: 01525 222109

Mobile: 07850 682815

www.pdyerelectrical.co.uk



Lee Hutt 25 YEARS
Heating & Plumbing Services

Bathrooms
DESIGN & INSTALLATION
TILING
HEATING
TAPS
Leaks
CALL OUTS
Free Estimates

01525 222145 07971 559185

CHIROPODY HOME VISITING PRACTICE

Julia Reading, BSc(Hons)

17 years experience

- * Corns * Hard skin * Verrucae
- * Thickened/Ingrowing nails
- * Nail cutting * Diabetic feet

Please telephone: 0774 647 2781

for more information or to make
an appointment

The COLLEGE
of PODIATRY

hcpc
registered
www.hcpc-uk.org

Spinney Landscapes & Gardening Services

All Aspects of Grounds Maintenance

Leaf Clearance • Grass Cutting/Scarifying
Patios & Driveways • Pressure Washing
Weed Control • Tree Work & Wood Chipping
Fencing • Snow Clearing • Mini Digger Hire

Tel: 01525 839622 Mob: 07876 500292

Email: spinneylandscapes@gmail.com
www.spinneylandscapes.com



A WONDERFUL EDLEFEST WEEKEND

Over 300 people attended the two nights at the beginning of June.

On the Friday Night, for the first time, Jazz was featured as the headline act and the Barrel House Vipers did not let us down. Rachel, the lead singer, gave powerful and clever renditions of some well known standards.

The Vipers were supported by Heidi Browne & The Alex Hart Band. Heidi skilfully mimicked instruments to increase her range of sounds.

There was a little bit of dancing towards the end of the evening, but we could not have known what was in store for Saturday.

We had escaped the heavy thunderstorms during the week, but early Saturday evening there was a downpour leaving some concertgoers drenched. So, with steam rising from some of the audience, The Dicemen

opened proceedings with a wide-ranging selection of songs, beautifully performed. Dolly Mavies and her band then raised the tempo and shoes were being tapped.

This was the setting for a tour de force from our friends Man the Lifeboats. Quite a few of their "groupies" had bought tickets so they were playing to a home crowd. The evening ended with 170 people dancing the Conga through the pews and naves, which was a sight to behold. A great night was had by all.

By donating merchandise, the group raised £140 for the local Food Bank.

The On-line Ticket Agency will be open from the end of November.

They used to say that if you haven't seen Bruce Springsteen in Concert, you haven't lived, well.....!





THE FRIENDS OF THE CHURCH ON THE HILL, EDLESBOROUGH



FREE to explore at heritage open days



We are delighted to confirm that St Mary's Church, Edlesborough will be participating in Heritage Open Days (HOD's) 13-21st September 2025. This is England's largest festival of history and culture. Both

digital and in-person events will be taking place across England.

HOD's is about celebrating our local communities and stories which feel more important than ever as we slowly return to the places we cherish. Places across the country throw open their doors to celebrate their heritage, community and history.

It's your chance to see hidden places and try out new experiences – and it's ALL FREE!

The Friends of the Church on the Hill will have displays about village history and plans showing how the Church building has changed, which fits with this year's theme of architecture. As a bonus, Sophie Chaplin, our local photographer will be showcasing her Project, please see below



for a summary, we will be launching her exhibition on Saturday 13th September.

The Church will be manned Saturday 13th & Sunday 14th September 10-4pm cream teas will be available. The Church will be open but unmanned the following weekend and volunteers will try to open for the remaining days of the festival – look out for the 'Open' sign on our notice board.

We look forward to seeing you at this event.

Friends of the Church on the Hill

HOD's website - heritageopendays.org.uk

Friends Facebook Page – *Friends of the Church on the Hill*

SOPHIE'S PROJECT

Doorstep Photos Project – Five Years On

In 2020, during the Covid-19 lockdowns, Sophie Chaplin Photography began the Doorstep Photos Project — capturing families, individuals, and businesses on their doorsteps across Eaton Bray, Edlesborough, Northall, and Dagnall. It was a way to connect while apart, to document resilience and unity in an uncertain time. What started as a simple idea quickly grew into a powerful community effort, raising £1,526 for the Hospice of St Francis and preserving a unique moment in our shared history.

Now, five years later, she is returning to those same doorsteps to reflect on how life has changed — growing families, evolving businesses, and new beginnings. This time, the project supports a new cause: raising funds for a defibrillator on Bower Lane. While the first project captured a pause in time, this one celebrates progress and continued community spirit. If you'd like to be involved (limited to 10 families) or support the fund, please visit: www.justgiving.com/crowdfunding/sophie-chaplin-photography





Steve the Mower Man

Steve Johns
All mowers and garden machinery
repaired and serviced
Collection and delivery available
07720 828166

Will Kimberley
Garden Services
01442 255784
Phone for a free no obligation written estimate
wkgardenservices@btconnect.com

- High hedges a speciality
- Fences erected and repaired
- General garden tidy up's
- In fact any job in the garden!

G & J Groundwork & Landscapes

Block Paving * Patios * Driveways
Clearance * Paths * Shingle * Slabs
Artificial Grass * Fencing
Free estimates
Garry
07949 118011

S M Reilly & Son Ltd
General Builders & Contractors
Turning Your House into a Home Since 1987
All aspects of the building trade undertaken

- *Extensions*Hard Landscaping*
- *Windows, Doors & Conservatories*
- *Fitting of Aluminium Bi-fold Doors*
- *Kitchen & Bathrooms*Drives*
- *Loft Conversions*

01525 221740 07970 637511



DM SECURITY

Commercial & Residential Alarm Systems

CCTV • Access control

Intruder Alarms • Locks

Electrical Installations

Fuse Boards • Re-wires

John Dorman: 07483 872017
Chris Mahoney: 07801 552113
20 Slicketts Lane, Edlesborough,
Dunstable, Beds, LU6 2JD

toni's tootsies 

mobile foot health care




-  **Fungal Infections**
-  **Ingrowing Toenails**
-  **Callus/Hard Skin**
-  **Cracked Heels**
-  **Nail Reconstruction**
-  **Verrucas**
-  **Nail Trimming**
-  **Corns**

Toni Nash is a fully qualified Foot Health Practitioner based in Slapton, Bucks... and she's ready to take your Call!

07484 749393
tonistootsies@gmail.com
www.tonistootsies.co.uk

SIGNS
VEHICLE SIGNS
BOARDS & BANNERS
STICKERS

BUSINESS CARDS
PRINTED & EMBROIDERED
CLOTHING



01525
851080

.CO.UK

07973
167779

12 HARMILL IND EST LEIGHTON BUZZARD LU74FF

www.pinstripes1995.co.uk

Join us on Facebook - **PINSTripES 1995**

WASHING MACHINE REPAIRS

ALSO
DISHWASHERS, TUMBLE DRIERS,
AND ELECTRIC COOKERS



Call

ANDERSON D.R.S.

01582 665764

www.andersondrs.co.uk

SALES AND RENTALS AVAILABLE

Established over 20 Years

DUNCAN TOMBLIN **TREE SURGEON**

Forestry Contractor • Tree Felling
Crown Reduction & Thinnings
Deadwooding • Hedge Cutting
Stump Grinding • Site Clearance
Private Agriculture Fencing Contractor
Chipper & Stump Grinding Hire
Digger Hire

FULL PUBLIC LIABILITY INSURANCE
FREE ESTIMATES

'The Best Choice For Your Tree'

TEL: (01525) 221946

MOBILE: (07802) 410728

12 Greenways, Eaton Bray, Beds

A McClelland
Pest Control



FOR FAST RESPONSE CALL:

Mobile 0777 494 8415

Office 01582 872158



specialists in: wasps - bees - ants
hornets - fleas - cockroaches - bed
bugs - pigeons - magpies - rabbits
rats - mice - moles - squirrels
foxes - mink - feral cats



UNMARKED VEHICLES

For further information please call or email
amcclellandpestcontrol33@gmail.com



EATON BRAY PARISH COUNCIL

Parish Clerk: **Mrs Heidi Head** | Email: clerk@eatonbrayparishcouncil.gov.uk
www.eatonbrayparishcouncil.gov.uk | Telephone/Text: **07931 479663**

For full contact details visit the Parish Council website. Follow **Eaton Bray** on
Facebook - Keep up to date with what is going on in the parish.



EATON BRAY PARISH COUNCIL REPORT: JUNE 2025

A hard copy of the draft minutes can be viewed on the Parish Council notice board at The Coffee Tavern.

A full copy of the minutes for Eaton Bray Parish Council can be found on our website:
www.eatonbrayparishcouncil.gov.uk

PARISH COUNCIL WEBSITE

To keep up to date with what is happening in your parish, you can get all Parish Council news and updates from the Parish Council website. The website has all Parish Council meeting agendas, minutes, financial documents and contact information as well as official sponsored events/initiatives and is the official council communications website. Visit it here: www.eatonbrayparishcouncil.gov.uk

EATON BRAY FACEBOOK PAGE



Follow Eaton Bray Parish Council on Facebook, keep up to date with your Parish Council and what is going on in the parish:

<https://www.facebook.com/EatonBray>

EATON BRAY PARISH COUNCIL ACCOUNTS

A copy of the Parish Council's Finance & Annual Reports can be viewed on the Parish Council Website.

PARISH COUNCIL REGULATIONS/POLICIES

Copies of the Parish Council's regulations/policies can be seen on the Parish Council Website.

FixMyStreet

CBC have a reporting system to make reporting easier, quicker and more accurate. To report and track highways and environment problems go online/use the FixMyStreet app:

<https://fixmystreet.centralbedfordshire.gov.uk/>



THE MEADS ALLOTMENTS: Allotment Inspection - SEPT 2025

An allotment inspection is due to be carried out on Tuesday 9th September 2025.

Date subject to change, please check the Parish Council website for any updates.

EATON BRAY PARISH COUNCIL MEETING

**HELD ON MONDAY 2ND JUNE 2025,
from 7:30pm**

(Minutes ratified at the Parish Council Meeting on Monday 7th July 2025)----

CBC CENTRAL BEDFORDSHIRE COUNCIL

Your Ward Councillor: Cllr Philip Spicer

Email: Philip.Spicer@centralbedfordshire.gov.uk

CBC Website:

www.centralbedfordshire.gov.uk

CBC Email:

customers@centralbedfordshire.gov.uk -

CBC Customer Services: 0300 300 8301

- 1) CBC Call for Sites: CBC are currently in the process of updating the Local Plan for Central Bedfordshire. As part of this there will be a need to allocate sites for new homes and jobs, and potentially supporting infrastructure. The 'Call For Sites' took place between November 2024 and January 2025. 626 sites were put forward, for various uses, including: residential, commercial, renewable energy and green spaces. Details on link: https://www.centralbedfordshire.gov.uk/info/332/call_for_sites
- (2) A505 Maintenance Program: CBC is to carry out general maintenance to the road, works commencing August 2025.
- (3) Bower Lane resurfacing. Planned works commencing 9th June 2025.
- (4) Streetlights: The red/white lights on top of the streetlights. This is an automated system, light sensitive, which can be controller from a central point (CBC).
- (5) Drains: CBC have a drain Rota for works throughout their wards. Eaton Bray is due to be cleaned October/November 2025.

BEDFORDSHIRE POLICE

- General Assistance/recommended number: 101 - Emergency: 999
- Textphone service: 18001 101
- Follow local policing team on Facebook:

<https://www.facebook.com/leightonbuzzardpolicing/>

- Crime Map for your area (details can be found on the Bedfordshire Police website): <https://www.beds.police.uk/area/your-area/bedfordshire/central-bedfordshire/leighton-buzzard--rural/about-us/crime-map>

PLANNING APPLICATIONS/APEALS/ENFORCEMENT NOTICES – JUNE 2025

A copy of the Parish Council's response to planning applications can be seen on the Parish Council Minutes available on the Parish Council website or obtained by applying to the Parish Clerk.

RECREATION GROUNDS

- **School Lane:** Gas canisters are being dumped, the Clerk to chase CBC regarding the process for disposing of these empty canisters as the Household Recycling tip refused to take them.
- **Holmans Field:** Quad bikes are gaining access through a large gap in the hedging (side of gate). The Parish Council to install a kissing gate to further limit unauthorised access.
- **The Rye:**
 - The Parish Council are looking to hold summer Bootcamp sessions (August) for Eaton Bray children, with costs covered by the council and run/organised by Bootcamp. Details to follow on the Bootcamp website, Parish Council website/Facebook page.
 - The entrance barrier to The Rye car park has been repainted.

BOWER LANE CEMETERY EXTENSION

(Phase 1) The initial groundworks at the cemetery, creating additional burial spaces, has been completed.

(Phase 2) A new fence, together with a small storage area for grave digger boards, is being installed along the boundary with Café Masala.

(Phase 3) The newly created/levelled land to be topsoiled/grass seeded.

(Phase 4) Native hedging (whips) to be planted along the rear boundary of the adjacent field.

EB BLOOMERS

- 1) The Parish Council would like to thank EB

Bloomers for all their hard work in creating some lovely flower displays in the village despite the constant challenge of having plants/soil 'removed' from the planters.

- (2) The Parish Council wanted to highlight that the plants are for all residents to enjoy as they enhance the village and would appreciate residents' assistance in helping to monitor any removal of the planters contents.

MONTHLY PAYMENTS: JUNE 2025/PERIOD 3

A copy of the Parish Council monthly payments can be seen on the Parish Council website or obtained by applying to the Parish Clerk.

ALLOTMENT INSPECTION: SEPT 2025

An allotment inspection will be carried out on Tuesday 9th September 2025
(weather permitting).

DATES FOR YOUR DIARY:

- (1) Picnic in the Park with music from the Heath Band

Sunday 24th August 2025, 3pm-4:45pm at School Lane recreation ground

The Parish Council have organised a 'Picnic in the park with music from the Heath Band'.

Bring your own food and enjoy the music. Two Portaloos (accessible to all) will be available on site. Please check the Parish Council Facebook/website for any updates (subject to cancellation for poor weather).

PARISH COUNCIL MEETING (1st Floor, The Coffee Tavern, Eaton Bray)

Details can be obtained from EBPC website:
www.eatonbrayparishcouncil.gov.uk

- Parish Council Meeting, Monday 1st September 2025 from 7:30pm
- Parish Council Meeting, Monday 6th October 2025 from 7:30pm

PARISH COUNCIL OFFICE (Ground floor)



10am-12noon at The Coffee Tavern, 18 High St, Eaton Bray, LU6 2DP

(Open dates/times subject to change, please check the

EBPC Website for updates) **Tuesday 12th**

August 2025 – Tuesday 9th September 2025

ASPECT

YOUR LOCAL ELECTRICIAN
OVER 20 YEARS EXPERIENCE

ELECTRICAL

CONSUMER UNIT UPGRADES (FUSE BOARDS)
LIGHTING - INTERIOR, EXTERIOR & SECURITY
HD CCTV
REWIRING
NEW INSTALLATIONS
TESTING & INSPECTION

ALL WORKS TO CURRENT WIRING & BUILDING REGULATIONS
PART P CERTIFICATED & FULLY INSURED

CALL STEVE ON
07976 283969
aspect@sparky.me





Ofsted
Good
Provider

"Pupils are unfailingly proud of their school" Ofsted, 2019



Eaton Bray Academy is a happy, inclusive family where pupils and community are at our heart. Together we inspire children to be curious and develop a genuine love of learning to provide strong foundations for their future.

Eaton Bray Academy

01525 220468

admin@eba.ec

www.eatonbrayacademy.co.uk

We provide wrap around care each day from 7:30am and have availability in most classes for pupils from the term after they turn two to Year 6.

Contact us to arrange a tour of our lovely village primary school.



Stephen D. Janes

(Established in 1982)

**CARPENTRY, JOINERY
KITCHENS FITTED
PROPERTY MAINTENANCE
TELEPHONE: 01525 220649**



JAMES FALCON-CROSS LANDSCAPING AND OUTDOOR LIVING DESIGN

**ALL ASPECTS OF LANDSCAPING
UNDERTAKEN INCLUDING
FENCING, TURFING AND PATIOS
TIMBER STRUCTURES
DESIGNED AND BUILT
VEGETABLE AND HERB GARDENS
01442 843258 / 07769 901325
ONECROSSFALCON@GMAIL.COM**

Misty Double Glazing?

Over 30
Years
experience.
FREE
Quotes

Over 30
Years
experience.
FREE
Quotes

**KEEP YOUR WINDOW FRAMES...
... WE JUST REPLACE THE GLASS!**

• UPVC • Aluminium • Or Wood

Because we replace just the glass the repair is a
Fraction of the cost of a complete replacement window.



BEFORE



AFTER

**mistydoublinglazing.co.uk
QUALITY GLAZING SERVICES**

01525 876808

WE ALSO REPLACE BROKEN...

• Glass • Handles • Hinges & Locks
AND REPAIR...Patio Doors & Conservatories!



BCA Chef of The Year



**Curry Life
Chef of the year**



**Spice Time Best Located
Restaurant in Est. of England**



**Café
masala**
Exquisite Indian Cuisine

Fully Licensed & Air Conditioned

OPEN SEVEN DAYS A WEEK: 5:30 - 11:00

CLICK AND COLLECT 10% DISCOUNT OVER £22

Tel: 01525 222264

Address: 63 Bower Ln. Eaton Bray, Dunstable LU6 1RB
Website: www.cafemasala.com



**Regional in Finalist
Est. of England**

DAGNALL WEATHER STATION (AONB)

Weather Conditions for June 2025

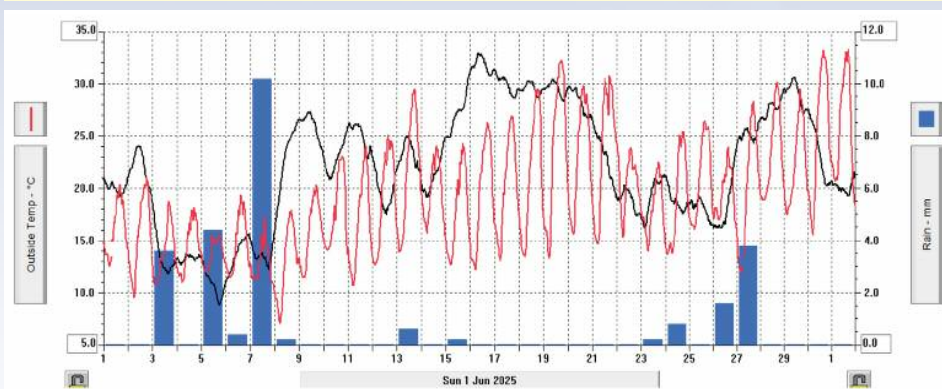
Elevation: 450 ft. - Latitude: 51° 50' 13" North - Longitude: 0° 33' 34" West

June was very sunny, warm and hot on occasions. Again, it was a dry month. Things started on the warm side, while the first week was unsettled. After that, the weather turned dry and the temperature started to climb. We reached 30.4°C on the 13th, the 19th saw a high of 31.9°C, and we topped out at 33.4°C on the 30th. We had only 26mm of rain, which is 45% of the June average. The running total rain for the year is 233.6mm, the equivalent of 65% average for the year so far.

Due to an intermittent fault, there is no wind speed or direction data this month. This is not easy to fix as the anemometer is secured to a chimney 10m from the ground. The station may have to go off air for a few days for repairs.

	High	Date/Time	Low	Date/Time
Temperature:	33.4°C	30 June 16.00	7.1°C	8 June 05.00
Mean Temperature	18.8°C			
Dewpoint:	22.5°C	28 June 16.00	5.7°C	8 June 05.00
Humidity:	100%	30 June 03.00	36%	19 June 15.30
Barometer:	1027.7 mb	16 June 08.00	999.5 mph	5 June 17.30
Wind Speed N	n/a	June	Months avg.	n/a
Wind Chill:	n/a	June	n/a	June
Dominant Wind:	n/a			
Rainfall *T= total rain days and moisture. R= Actual rain				
*Rain Days: 11, 11(R)	Wettest Day 7 April		10.2mm	0.402 ins
Monthly Rain:	Total	June 2025	26.0 mm	1.024 ins
Yearly Rain:	Total	6 Months	233.6mm	9.197 ins

June 2025 ~ Temperatures, Rain. Pressure black line



For weather data 24 hours a day, updated every 15mins, visit: www.dagnallweather.co.uk and http://bit.ly/weather_dagnall this site forecast and much more

If anyone has a question, comment or wishes to contact me please email: david@dagnallweather.co.uk or telephone: 01442 843883

Dagnall weather now has an app for your iPad & iPhone! Just go to the apple store, search for Wunderstation and follow the instructions to Dagnall Weather Station. Now updated every minute.

NORTHALL BAPTIST CHURCH - 200 YEARS AND STILL GOING



A little Church with strong local links.

Seeking or Searching

These days there is a lot of searching going on. We used to really enjoy the songs of the Christian Group 'The Seekers', headed up by the amazing Judith Durham. She was singing on the world stage for over 50 years. Most people would still recognise the song 'Georgy Girl', which even knocked the Beatles off the top step of the charts. She was also a Gospel singer. One of my favourites is 'Turn, Turn, Turn' based on the scripture in Ecclesiastes chapter 3, where it tells us that there is a time for everything, and a season for every activity under the heavens. Birth, death, planting, weeping, laughing are among the suggestions but also some really odd things such as hate but also a time to search and a time to give up!



Mary & Joseph search for 12 year old Jesus in the Temple amongst the Scribes, Pharisees & more (Luke 2 41-52) [FreeBible Images.org]

Currently there are searches going on for people who have been lost in Texas because of flash floods – over 100 people have been confirmed killed but many others still missing. When do you stop searching for your loved ones?

My husband and I have researched our Family

Tree. It's very time consuming but has revealed some very unpalatable facts. A relative committed bigamy after leaving her small children with her husband. Another was abused by her Uncle! It has also put us in touch with relatives we had never heard of.

Recently 3 Americans joined our service on Sunday morning. They had been researching their family history and discovered that they were descendants of one of the early leaders of Northall Baptist Church, a William Johnson who you can read about in the booklet mentioned below, *Rebels in Green Pastures*. It had been against the law to attend a non-denominational Church and not too many years ago that was a crime.

Many at this difficult time are searching for something more meaningful in their lives, answers to this muddled world of wars, lies and hate. Matthew 7 is headed at verse 7 with Ask, Seek, Knock. It says 'Ask and it will be given to you; seek and you will find'. Jesus was teaching about the good gifts that our Father in Heaven has for those who trust in Him and asks us to do to others what you would have them do to you. This may not sort out the troubles of the world but by trusting in the love of Jesus, we will find the benefits of the peace he brings. So, Ask, Seek and Knock to find Jesus who loves you.

Join us for our Sunday services in the Church at 11 am. We'd love you to join us for our worship and song. You will get a warm welcome. For those unable to attend in person we also stream our services.

For those interested in the history of Northall Baptist Church, a free copy of the booklet, *Rebels in Green Pastures* can be supplied or downloaded from our website:

<http://northallbaptistchurch.org/>

Ruth Cox **Tel: 07791 425625**



TODDINGTON

INDEPENDENT FINANCIAL ADVICE



DO YOU NEED FINANCIAL ADVICE?

We can help you to review your current or proposed,

Mortgages, Insurances, Pensions & Investments, Equity Release, Inheritance Tax, Wills and Trusts, or a general review of your current position?

'As a mortgage is secured against your home, it may be repossessed if you do not keep up the mortgage repayments. The financial conduct authority does not regulate tax and estate planning or will planning'

Unlike some TV adverts we don't charge a fee for equity release, so no broker fees added to your loan! 'Equity released from your home will be secured against it'

LOCAL OFFICE: Toddington

Contact: Philip Hadlow

Tel/Fax: 01525 874100

Mobile 07768 277 532

info@toddingtonifa.co.uk

www.toddingtonifa.co.uk

Free Will with Investments & Pensions placed through us of over £50,000 and within 6 months of investment

Talk to us for a free initial consultation

Toddington Independent Financial Advice Ltd is authorised and regulated by the Financial Conduct Authority.

Registered office: The Stables, Griffin Farm, Conger Lane, Toddington, Bedfordshire, LU5 6BT

Registration Number: 760687 Company Number: 9931606

Absolutely Plastered

DOMESTIC/COMMERCIAL, CLEAN AND RELIABLE SERVICE,

FREE ESTIMATES, FRIENDLY ADVICE

*** Plastering & Coving**

*** Floor Screeding**

*** Pebbledashing & Rendering**

*** Dry Lining**

*** Cornices & Mouldings**


*** Insurance Work Undertaken**



CALL NICK CONWAY ON

Mobile: 07751 830716


17 Kirkstone Drive, Dunstable LU6 3PP





JOANN LATUS SCHOOL OF DANCE

Dance classes in Ballet,
Tap & Modern Dance in
Eaton Bray

Free trial classes, contact us for more
information

 info@jolatusdance.co.uk

 07800 518654

 www.jolatusdance.co.uk

Follow us on Facebook and
Instagram @jolatusdance

NG AUTOS

MAKING YOU AND YOUR CAR HAPPY

CAM BELTS • MOT'S • MOT REPAIRS • HEAD GASKETS
AIR CONDITIONING • RECOVERY/BREAKDOWN
DIAGNOSTICS SERVICING • BRAKES • SUSPENSION
CLUTCHES • GEARBOXES • TYRES • WHEEL BALANCING
WHEEL ALIGNMENT COLLECTION & DELIVERY

CALL NICK OR GARY

01525 220850 OR 07972 198615

**SPARROW HALL FARM, LEIGHTON ROAD,
EDLESBOROUGH LU6 2ES**

Pampered Pups

Mobile dog groomers

Call or message to book an appointment

07394672646 / 07708607402

-  Dog Washing
-  Drying
-  Haircut and styling
-  Nail clipping

**We come to you
No mess
No stress**




The Gentleman Gardener

Let your local RHS qualified
gardener make your garden
beautiful, from simple
garden maintenance to total
redesign of your garden.

Please call Barry on
**01525-222451 or
07541196384**
to pop round for a free chat.

SUNDAY FRIENDLY CRICKET ON THE GREEN

Please email

edlesboroughcricket@gmail.com

If you'd like to join our Sunday developmental side. Male/female, all ages and abilities welcome.



Sponsored by

SJB Man-and-Machine

Groundworks Fencing Drainage

Driveways Landscaping

Brickwork Logs

07584 076256

EATON BRAY TENNIS CLUB

...Let's Play *Tennis*...

If you are interested in tennis we would love to hear from you.

As a club we offer :

- Junior and adult group coaching during term time
- Tennis camps in Easter and summer holidays
- Weekly social tennis
- Opportunities to play in league matches
- Free use of courts for all members

Many membership packages available



Please scan our QR code

to visit our website
for more information.

Or call Head Coach

Sara Bamford on **07561 571578**

sara_leavy@hotmail.com



We have been in the construction industry for over 13 years. We specialise in general building and refurbishments, extensions, loft conversions and new builds. We cover many areas and no job is too big or too small.

GBR CONSTRUCTION LTD

Office: **01923 262265**

Jason: **07752 011674**

Robert: **07832 216810**

Email: gbrconstructionltd@yahoo.co.uk

You can trust us to bring your vision to light.



What a lovely summer we have had so far and long may it continue.

There is extra work of course with the garden and with children on holiday from school. Our work has increased too in the last quarter year as requests for transport to medical appointments have risen and we have 14 new clients requesting help. Unfortunately we haven't had a matching increase in volunteer drivers. We badly need YOU and we are especially looking for volunteers from Totternhoe.

We are a valuable support for villagers who find it difficult to get out and about. Eaton Bray Good Neighbours is part of a network of similar groups operating under the umbrella of Bedfordshire Rural Charities. Our local group covers Eaton Bray, Edlesborough, Totternhoe and Northall and has now been in operation for over ten years. Volunteers are not on a rota or committed in any way. They can just opt into a job if it is convenient. Although we are volunteers, petrol is paid at a standard rate.

**We look forward to hearing from you.
Our telephone number 07930 987064**

DAGNALL COMMUNITY CHOIR

As the choir celebrates its 15th anniversary this year, we are delighted to give you details of the special event we have coming up in early September. We will be hosting a "Come and Sing" choral workshop, with acclaimed composer and conductor **Philip Stopford**, on Saturday 6th September.

Please come and join us for a day of musical creativity - whether you're a seasoned singer or simply love to sing, this workshop is a wonderful opportunity to work with a talented and accomplished musician, sharing the joy of singing and the warmth of the musical community. It promises to be a thoroughly enjoyable day.

This will be a whole day event, running from 10.00am to 4.00pm at All Saints Church, Dagnall (the little church on the roundabout, where our choir rehearsals take place.) Tickets are £15 per person, to be purchased in advance and the event is open to everyone. We recommend booking early to secure your place!

The ticket price includes light refreshments (tea and coffee); please bring your own lunch or make other lunchtime arrangements. We will have the use of Dagnall Village Hall, across the road from the church, which will provide additional parking and facilities.

Tickets can be purchased by calling 01525 220189, or online via the QR code.



Please visit our website www.dagnall-community-choir.co.uk for further information, or if you have any questions, please email dagnallcc@gmail.com.



Dagnall Community Choir meets every Monday evening from 7.45 to 9.45pm, at All Saints Church, Dagnall. We welcome new members and are particularly keen to recruit to our Tenor section at present. If you'd like to come along and join us, we'd love to see you at one of our rehearsals. There are no auditions, and no requirement to be able to read music – all that is required is a love of singing!



Moir's Therapeutic Pilates



St Jude's Clinic Moir's Therapeutic Pilates

Helping you be your best self

'HELPING YOU TO BE YOUR BEST SELF'

For local Pilates classes aimed at injury recovery and prevention with an APPI qualified Pilates Instructor and Chartered Physiotherapist.

'Let Pilates help you live the life you want to lead'.

For more information:
www.stjudesclinic.co.uk

Or email:
moira@stjudesclinic.co.uk

Moir's Therapeutic Pilates Classes.

Billington Village Hall:

Tuesdays 1.30 pm – 2.30 pm

Wednesdays, 7 pm – 8 pm &
8.05 pm – 9.05 pm

Great Gaddesden Parish Hall:

Fridays, 9.45 am – 10.45 am

AND a new class

11am – 12 noon

ARC Contract Services Ltd

- Painting & Decorating • Plastering
- Wall & Floor Tiling • Door Hanging
- Bathroom & Kitchen Installations

20 years experience

All work guaranteed and fully insured

Call Adrian: **01582 539179**

Mobile: **07789730580**

email: adriancalder107@live.co.uk

CHARLES HILL

GARDEN SERVICES LTD

DESIGN | BUILD | MAINTAIN

LANDSCAPE CONTRACTORS

NCH Horticulture City & Guilds Garden Design

A professional company working with all your garden requirements from design to complete landscape.

07773 723236

www.charleshillgardenservices.co.uk

www.allyearroundbbq.co.uk



Providing an outstanding professional, cost effective and friendly service to our business and personal clients.

Call now for
a free initial
consultation
01582 608601

OUR SERVICES

Taxation

- Pay the minimum tax

Compliance

- Business administration

Support

- Grow your business

Start-ups

- Your business a reality

Get to know you

- Consultancy & advice



☎ **01582 608601** ✉ enquiries@stotengillam.co.uk
www.stotengillam.co.uk

Alban House, 99 High Street South, Dunstable, LU6 3SF



...for all your pest solutions

Peter Tong
(RSPH Level 2)

01525 220653

07958 669706

Email: peter@nimbypest.org.uk
www.nimbypest.org.uk





Tea tent 2025

Albeit a bit windy at times this year's carnival was back to normal with crowds of people coming to enjoy all that was on offer!

The logistics team were amazing with putting up the tea tent and Russell Sears ensuring our tea urns and fridges had the power they needed. We are very grateful to everyone for their effort in helping to set up.

Our start-up volunteers worked hard to prepare the tea tent to greet our first customers by 10.30 am. From then on, there was a constant flow of people wanting hot and cold drinks and tempted

by a variety of savoury and sweet treats. It was great to welcome new volunteers to our crew who, along with our regulars, served and chatted to our customers throughout the day.

With the help of all our volunteers we are delighted to say our takings for the day was **just over £2,700**, which is amazing!

Thanks to everyone as we simply couldn't do it without you all.

Karen, Julie & Sue



Edlesborough Carnival 5th July 2025

No carnival would be complete without the traditional convoy of floats and our carnival is no exception. Leading the way with Westrope tractor pulled float was our villages Carnival King and Queen with lots of excited prince and princesses. They all waited very patiently for the procession to start and make the journey from the Orchards to Edlesborough Green.

Village enthusiasm and joyful faces waving on the procession adds such excitement to everyone on the floats. What is so wonderful to see is the involvement of all ages from the young to the older generations all enjoying the day! Our neighbours' homes along the procession were brilliantly dressed in bunting supporting our rural farming community and from the float these all looked fabulous! Thank you!

Carnivals are a mainstay of the English village institution, and we have certainly one of the largest covering the whole of the Green with plenty of visitors from out neighbouring towns and villages. The Carnival committee work tirelessly each year to make this happen and will always welcome involvement from more villagers to ensure this stays with us for many more years to come.





Best Dressed House & Business

What an amazing day!

We had the joy of driving through **Eaton Bray** and **Edlesborough**, where we were treated to a fantastic array of creative displays and bunting lining the entire procession route. Even the **bus stop** had bunting on it—what a sight!

From the **Market Square** at the **White Horse** to the **Village Green**, everything looked absolutely spectacular.

It made our job of judging the **Best Dressed Houses and Businesses** incredibly tough. Opinions were divided, but after much deliberation, we're excited to announce our **CUP WINNERS**:



Best Dressed Business

The White Horse Pub



Best Dressed House Eaton Bray

The Old Vicarage:

"Get Off My Land - Protect Our Countryside"



Best Dressed House Edlesborough

2 St Mary's Glebe:

"The Ladybirds - Under the Magnifying Glass"

A **super special thank you** to everyone who took the time to design your displays. The creativity and effort were outstanding—from the **giant hedgehog** and **squirrel**, to the **farmyard** and **vegetable stall**, and the wonderfully **painted animal paper plates**, to name just a few.

Your community spirit made the day truly unforgettable.





Best excuse ever for a hopefully brief but very grateful Focus write up article this month - I am nap trapped by my 1 year old granddaughter pray for no misspelling ...

Thank you for all your support before, during & after the Carnival - we hope you all had a great day. We're still counting the pennies (literally thanks to a mystery donor and their spare change stash) - plus conservative estimates are more than £800 combining the Tombola & White Elephant stalls. Does anyone know why the term White Elephant is used? We are delighted to say many of our donors & supporters are registered with us for Gift



Aid - please request details of this scheme from a member of the committee (other than myself) as my knowledge is limited and said 1 year old has just woken up!

Wednesday Club is closed for the entire month of August for all volunteers and staff to recharge their batteries - club phone will not be monitored daily so please leave a message & we'll get back to you ASAP. Club Phone no 07854230243, enquiries to join, offers of assistance, sunny holiday destination getaway offers, produce gluts etc. thank you. See you on the first Wednesday of September!!

AGM - notice is hereby given that on 20th August at 2pm our committee will be meeting at Northall Village Hall, 2pm. Those with interest are welcome to attend and join us for light refreshments - thank you.

Our Music Quiz Night (Friday 13th June) was a great success - we almost sold out despite several teams being unable to join us. Note to self: advertise the date(s) well before the event

so everyone's holidays can be rearranged to suit.

Following my plea for rhubarb I now have promises for courgettes, runner beans, more rhubarb, cooking apples - thank you for messaging & we'll be happy to relieve you of excess produce anytime. So ... I'm really pleased to confirm a willing volunteer cook has offered to prep the produce for freezing and storing.

Harvest Auction date 3rd October - usual details to follow - thanks to our hosts The Swan, Northall and our star auctioneer.

Your donations of goods always go a long way to support our fundraising efforts: We gladly accept and appreciate regifting items, plus seasonal fruits and vegetables



enhance our cornucopia of harvest goodies. Please remember us - many of you will know that I'm contactable via the Facebook page - messenger sometimes too.

Apologies my left arm has now got pins and needles - the running order of my piece has lost the plot and I'm sure I've forgotten important things to tell ... Ooooh Armchair yoga!! What can I say ? A lovely taster session and we hope to become a regular activity for our members - more details in next Focus.

JellyDrops - stop us & try one before they run out - more details next issue.



WALK OR RUN TO REBUILD LIVES AT THE DENS WOODLAND TRAIL



Gear up for one of the biggest cycling events in the South East

A legendary cycling event returns on Sunday 21st September at Hemel Hempstead's Gadebridge Park.

The DENS Hillbuster will feature a brand-new 150k route, alongside 120k, 100k and 60k options, across the breathtaking Chiltern Hills and countryside of Hertfordshire, Bedfordshire, and Buckinghamshire.

In partnership with British Cycling, the

popular sportive attracts cyclists from the Home Counties, London and beyond – with all proceeds supporting DENS, a local charity helping people facing homelessness, poverty and social exclusion.

Other exciting highlights include the addition of chip timing, well-stocked feed stations and a buzzing event village where cyclists can celebrate after conquering their challenge.

Charlie Cadogan, a Kings Langley resident, is excited to take on the new 150k route on his sixth time participating in the Hillbuster.



He said: "Wherever a longer route takes us, there is going to be more stunningly glorious countryside to ride through. I love the challenge, it's very social and it's very well organised. It's lovely to see the better side of humanity as the cyclists and marshals look out for each other."

Nicky Maxwell, Community & Events Manager at DENS, added: "The DENS Hillbuster has grown to become a

standout fixture in the local cycling scene.

We're expecting this year to be our biggest yet, with hundreds of passionate cyclists from around the nation joining us and using their pedal power to help rebuild lives."

To be a part of the action, book your place for the DENS Hillbuster now at www.dens.org.uk/cycle.

Alex Copley

Communications Lead

T: 01442 800268

Swallows: Our Summer Visitors

Swallows are remarkable long-distance migrants, flying thousands of miles between their breeding grounds in the UK and their wintering areas in Africa. They undertake this journey twice a year and average 200 miles a day. They are known for their impressive aerial acrobatics, darting and swooping through the air to catch flying insects. Their agile flight patterns are a key part of their hunting strategy. Swallows can reach impressive speeds during flight, often flying at around 25-30 mph and capable of reaching even higher speeds when pursuing prey or avoiding predators.

They build cup-shaped nests using mud and straw, which they attach to structures like buildings, bridges, and eaves. The nest is lined with grasses and feathers to soften the inside. Swallows often return to the same nesting sites year after year. Research has shown that they prefer to nest near areas with high human activity, which is thought to be due to some kind of protection we provide from predators! During courtship, male swallows will sing enthusiastically to attract a female, and then lead them towards good nesting spots, or an old nest in their territory. Once at the nesting site, they will resume singing and quite often use a type of 'enticement' call to attract females. Male swallows mimic the call of a nestling, and this is thought to make females respond positively as they would when caring for nestlings.

The barn swallow is the most widely distributed member of the swallow family in the world. The family 'Hirundinidae' consists of approximately 90 species, spanning the

'swallows', 'martins' and 'saw-wings'. They all are fantastic fliers, but not all species in this family migrate like our beloved barn swallow. In the UK, their return in spring has been celebrated as a harbinger of warmer weather and the onset of summer. This same sentiment was echoed in Ancient Greece, where they held festivals in Rhodes upon seeing the first swallow arrive. As part of the festival, children would run around to different houses pretending to be swallows, demanding to be fed treats.

Our resident swallows in the UK are also known as the barn swallows, which are so called as they used to reside in our barns! Newer build barns aren't as appealing to swallows, and as

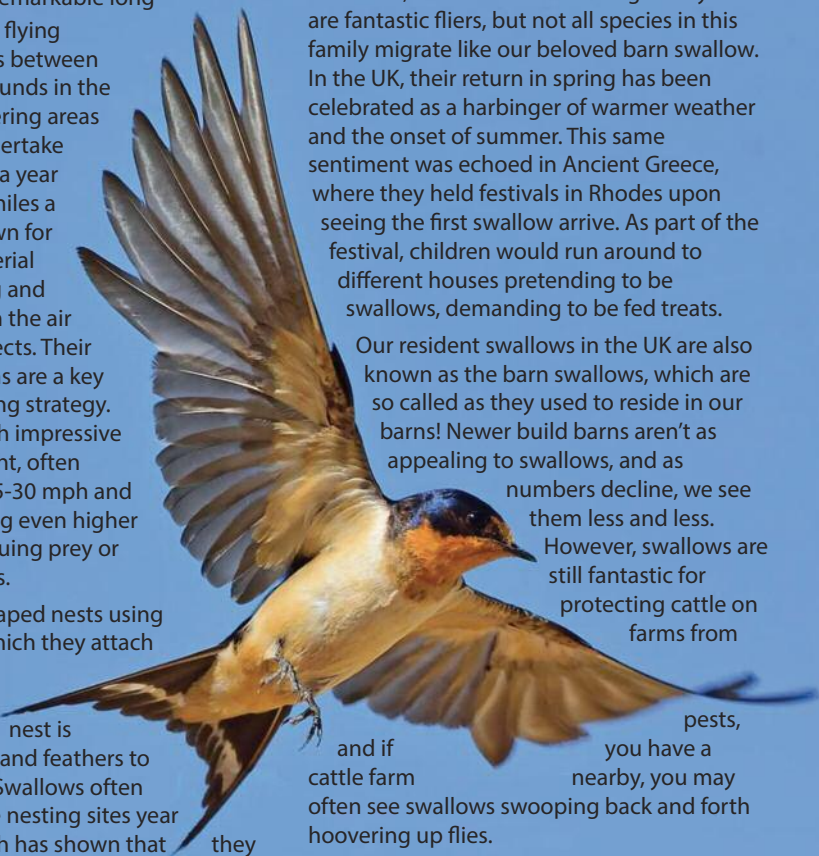
numbers decline, we see them less and less.

However, swallows are still fantastic for protecting cattle on farms from

pests, and if you have a cattle farm nearby, you may often see swallows swooping back and forth hoo-ver-ing up flies.

Did you know that the highly forked tail and the 'tail streamers' of the swallow are due to sexual selection? Research has shown that female barn swallows prefer to mate with males with longer tails. Producing a tail longer than average is energetically costly and shows the swallow is of good quality-and likely will have good genes for their babies or be good providers!

Some regions in the UK have reported declines in swallow populations, potentially due to factors such as habitat loss and climate change affecting their breeding and wintering areas. In the last 10 years, populations have plummeted by over 46%, which we think are linked to catastrophic declines in insect numbers.



FRESH MILK

Delivered in your village

Eaton Bray Dairy

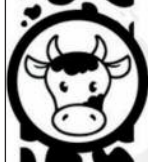
Eaton Bray Dairy deliver fresh milk and goods direct to your doorstep 3 days a week, 52 weeks a year by 8:00am.

We pride ourselves in offering a reliable and quality service. Offering the best prices, delivering all types of milk in glass bottles or plastic cartons.

Quality groceries supplied by Pecks Farm Shop, Eggington and delivered with your milk.

www.eatonbraydairy.co.uk
eatonbraydairy@gmail.com

07308 300793 • Steve



CDM Builders Ltd
07984086029



GENERAL BUILDING
NEW HOMES
EXTENSIONS
CONSERVATORIES
ALTERATIONS
BRICKLAYING
GROUNDWORK
PATIOS

DIGGER AND/OR DRIVER FOR HIRE

With over 20 years experience in the building trade

All aspects of work undertaken by our own professional tradesmen to a very high standard

Please contact Clive for a free quotation

T: 01582 203825 M: 07984086029

Email: Clive.munt@hotmail.co.uk

Springbank, Bottom Drive, Eaton Bray LU6 2JS



Charlotte Lyons
Physiotherapy

Keeping You Active

Physiotherapy Clinic

Leighton Buzzard

Open Monday to Saturday

Providing Expert Clinical Care

Treating Muscle, Tendon, Joint, and Nerve Injuries. Rehabilitation including Pre and Post-Operation, Sports Injuries and Dizziness.

**Craven House
Water Lane, Leighton Buzzard
LU7 1FA**

Book online:

www.charlottelyonsphysiotherapy.com

charlottelyonsphysio@gmail.com

07446 765945



BELLOWS MILL

Eaton Bray



Licensed for
Wedding Ceremonies

Idyllic lakeside setting or barn available for up to 80 guests.

For more information or to arrange a viewing email Rachael on reservations@bellowsmill.co.uk

www.bellowsmill.co.uk



WHERE FITNESS
AND FUN
come to party

6 Classes a week for you to
choose from in Eaton Bray

Come and try us out with...

3 Classes for £10

Dance Cardio, Strength
Training, HIIT, Stretch, Low
Impact... we've got it all!



Beth 07539739136

Jazzercisesouthbeds

Jazzercise South Bedfordshire Jazzercisesouthbeds@gmail.com



Eaton Bray Academy

Mini Marathon

Our school, Eaton Bray, completed a mini marathon, 2.6 miles, which every child in the school took part in from reception to year 6 to raise money and awareness for

The Rennie Grove Peace Charity. This is a fabulous local charity that supports the community. A massive **£3035** at least was raised (Some was put directly into the charity box and uncounted)

This will help so many people involved with the hospice patients and families alike. Our small school has an amazing community spirit as the generosity shown reflects.

Thank you for raising the local community awareness for this amazing charity.

Jayne Cosgrove



ST MARY'S CHURCH ECO GARDEN, EATON BRAY

The churchyard of St Mary's Church, Eaton Bray, was closed for burials in 1882 because there was no space for new graves. Later many of the gravestones were moved to the perimeter of the churchyard to create an open space around the Church. The maintenance of the churchyard is the responsibility of Eaton Bray Parish Council.

Churchyards are home to a wide variety of wild life and native plants, probably because the soil hasn't been cultivated for many years. A survey was conducted at St Mary's and a variety of native plants and grasses were found. It was decided not to mow a small area of the churchyard near the Village Hall one summer to give wild plants chance to grow. Since then the area has been expanded.

Near the entrance to the hall some shrubs have been removed and the area has been replanted with a native hedge, to attract wildlife, and various wild flowers allowed to grow around it. Later some fir trees had to be cut down because they were unsafe. The stumps and some logs have been left to create a seating area.

The vegetation in one corner of the churchyard has been allowed to grow and will be cut back later in the summer, after the flowers and grasses have seeded, and the dead vegetation removed to allow new growth and seed germination. Wide paths have been made through the area to allow visitors to see what is growing.

A dead hedge has been built using dead branches, held in place with stakes. It is not a hedge that has died but made of dead material! Ivy can be planted to grow through it which will provide more shelter for insects and nesting birds.

The bug hotel provides shelter for solitary bees, beetles and other creatures. It is also a place where bumble bees can lay their eggs before the winter. These hatch in the spring as the next generation.

The latest addition to the Eco Garden is a small pond made from a rigid blue plastic liner which was painted black. One side of the pond is shallow to



allow access for animals to drink and enter the water. Plants are growing in the water to aerate it and provide shelter for aquatic life.

There is further planting around the pond.

Thanks go to The Edlesborough and Eaton Bray Beaver Group, their parents and leaders and members of St Mary's congregation for their efforts creating the Eco Garden and now maintaining and improving it.

You are very welcome to visit it.

Sally Taylor





Your local

GUTTERBUSTER

cleaning & repairing your gutters

01442 874540

07749 977997

adam@localgutterbuster.com

Nursery to Year 6

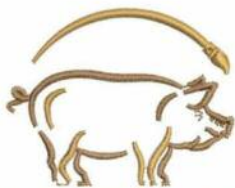


We welcome
you to view our
happy small
school.

Please contact
the office to
arrange a visit.

www.dagnall.bucks.sch.uk - T:01442 842473

office@dagnall.bucks.sch.uk - Main Rd South, Dagnall, HP4 1QX



Westrope Butchery
Makers of Bunkers sausages

**17 The Rye
Eaton Bray
LU6 2BQ
01525 868620**

Opening hours

Tuesday - Friday 08:00am - 5.30pm

Saturday 08:00am - 4pm

Sunday 08:00am - 12pm

**Find us on social media - The Westrope Butchery
Local farmers & family butchers
www.thewestropebutchery.com**



**EDLESBOROUGH
PRIMARY ACADEMY**

**Inclusive education that
inspires inquisitive learners**

'I'm very grateful for such a good school
for my children to walk to, thrive in and
feel that they belong to.' – **Parent**



01525 220431 · EPAManager@epa-primary.org · epa-primary.org
Edlesborough Primary Academy, High Street, Edlesborough, Dunstable, Bedfordshire LU6 2HS

Edlesborough Primary Academy is part of the Knowledge Schools Trust.

Dagnall Under Fives has been a cherished part of our community since 1975, helping countless children prepare for their school journey. However, we regret to share that we will be closing our doors for the final time on Thursday, 17th July 2025. We sincerely thank all our wonderful parents—both past and present—for the amazing memories we've created together and wish you all the very best for the future.



**EDLESBOROUGH
TENNIS CLUB**

**Come and play tennis
with us at our friendly
club on The Green**

- High quality floodlit courts with easy booking system
- Coaching available for adults and children from our LTA coach
- Weekly club nights, with balls and floodlights provided

Contact us at:
enquiries@etctennis.org
or visit us at:
www.etctennis.org

ADVICE AND INSIGHTS FOR KIDS IN THE GAME

The Power of Play: Why Fun Comes First

If you've ever seen kids light up when playing tag, you'll know that joy is a powerful teacher. In football, fun should never be a side effect—it should be the goal. Children learn best when they're engaged and smiling, and that means designing training sessions that feel more like play than drills.

Whether it's fun challenges, creative games, or silly forfeits, injecting fun creates an environment where learning happens naturally. And when children associate football with happiness, they're more likely to stay active and involved for life.

Coaching Tip: Add mini-games to every session—such as “beat the coach,” “crossbar challenge,” or “nutmeg tag.” Keep the atmosphere light, playful, and full of laughter.



Daniel Riley
Coach for EB Lions
U11 Saturday Team



**Eaton Bray
Cricket Club**
(Est 1914)

2 Teams Herts League
1 Team Beds Sunday League
1 Team Village T20 League
1 Team Ladies Softball
5 Junior Teams
U9 U11 2xU13 U15

Good on and off field facilities
Come and join a progressive
family friendly cricket club
For more information
please contact us on

Facebook & X
@EatonBrayCC





Eaton Bray Cricket Club

More success for the Bray.

Results

June 13 Eaton Bray Outlaws 136-1.
Owen Brown 58 n/o. Eggington 131 a/o.
}Eaton Bray won by 5 runs.

June 14 Eaton Bray 1st X1 311-3.
Andy Norris 149 n/o Owen Brown 55
Azeem Akhtar 50. Ickleford 250 a/o.
Eaton Bray won by 61 runs.

June 14 Boxmoor 111 a/o.
Eaton Bray 2nd X1 113-4. Oliver Harris 51 n/o.
Eaton Bray won by 4 wickets.

June 15 Eaton Bray Sunday X1 140 a/o.
Harlington 142-7.
Harlington won by 3 wickets.

June 21 Eaton Bray 1st X1 304-5.
Azeem Akhtar 101 n/o. Wheathampsted 180
a/o. Eaton Bray won by 124 runs.

June 21 Ley Hill 120 a/o.
Eaton Bray 2nd X1 123-7.
Eaton Bray won by 3 wickets.

June 22 Eaton Bray 2nd X1 225-8.
Junaid Ashiq 82. Offley & Stopsley 185 a/o.
Eaton Bray won by 40 runs.

June 27 Eaton Bray Outlaws 110-7.
Leighton Buzzard 112-4.
Leighton Buzzard won by 6 wickets.

June 28 Eaton Bray 1st X1 83 a/o.
Ley Hill 76 a/o. Aaron Gauntlett 5-19.
Eaton Bray won by 7 runs.

June 28 Eaton Bray 2nd X1 207-8. Joe
Braddon 60. Northwood 43 a/o. Jerry Jamil
4-12. Eaton Bray won by 164 runs.

June 29 Kempston 174-9.

Syed Shah 4-11. Eaton Bray Sunday X1 177-2.
Azeem Akhtar 105 a/o. Eaton Bray won by 8
wickets.

July 5 Flitwick 256-6.
Eaton Bray 1st X1 134 a/o.
Flitwick won by 122 runs.

July 5 Eaton Bray 2nd X1 219-7.
Ben Nye 79. Berkhamsted 159 a/o.
Eaton Bray won by 60 runs.

July 6 Wolverton 191-3.
Eaton Bray Sunday X1 134-7.
Wolverton won by 57 runs.

Eaton Bray Cricket Club are always looking out for new players of any age or ability. We run 2 senior teams in the Herts League and a senior side in the Beds Sunday League. 5 Junior teams at aged U9 U11 2xU13 U15 and a Ladies Softball team. If you would like to join a progressive family friendly club pop down to the Rye Gardens or get in touch via Facebook or X @EatonBrayCC

The club would like to thank our sponsors
Meadow Marquees The Westrope Butchery
Fine & Country
Homes Prestige
Kitchens Emma Jane
Tutoring Castles
Estate Agents and
the Focus Magazine
for their continued
support.

Please enjoy your
cricket with Eaton
Bray in 2025.





A team you can put your trust in.

Here at Paramount Plumbing & Heating, we believe that trust and reliability is what makes us stand out from the rest. With over 30 year's experience, we have the knowledge to overcome any issues and deliver an outstanding customer service.

Contact us today for your free quotation.



- ✓ Gas & Boiler Installations
- ✓ Servicing and Maintenance
- ✓ Heating Systems & Underfloor
- ✓ Power Flushing
- ✓ Air Source Heat Pumps
- ✓ Bathroom Transformations

Lucas (Northall)

★★★★★

After responding to our query very quickly, Paramount Plumbing and Heating came to our new home to work on our bathroom. They were extremely professional and knowledgeable - would absolutely recommend to anyone!



Warren (Eaton Bray)

★★★★★

Brilliant work from Paramount Plumbing again today for a replacement boiler. This must be our 4th or 5th project with these guys and they are always professional and good value. 100% recommend this company.



Jim (Eaton Bray)

★★★★★

Burst pipe early Saturday morning and David responded within 20 minutes. Problem solved immediately and follow up was first class!



Bernadette (Edlesborough)

★★★★★

I cannot speak highly enough of this local business. Excellent speed of service, professional staff, all work and pricing fully explained and job completed to our full satisfaction. I will be confidently recommending them to others.



Andrew Jones (Edlesborough)

★★★★★

Our bathroom installed to perfection, a professional job from start to finish. I would recommend David and his team to anyone.



☎ 07810 115 611 ☎ 07917 054 045
✉ info@paramountplumbing.co.uk
🌐 www.paramountplumbing.co.uk



All Trees



Reliable & friendly service • Family run business
Competitive prices • Qualified advice • Fully Insured

Tree work undertaken

Tree felling • Precision dismantling • Crown reduction
Crown thinning • Crown lifting • Formative pruning
Stump grinding • Stump removal
Deadwooding • TPO / conservation area work

Hedge work undertaken

Hedge reduction • Hedge planting • Hedge trimming
Shrub clearance • Hedge laying

Other Services

Fencing • Soft Landscaping • General Garden Maintenance
Green Waste Recycling • Tree Lighting • Logs / Kindling

CALL NOW ON:

07522 847 827
01525 220 823

E: info@alltreesgardenservices.co.uk

W: www.alltreesgardenservices.co.uk

WE NEED SOME HELP!

Would you like to join our distribution team?

We are always on the look out for volunteers to post Focus through letterboxes. If you would like to help out in your road or your local area we would love to hear from you.

Right now we're looking for someone to join our "drop off" team to deliver Focus parcels to our local distributors.

Could you spare a few hours once a month? Usually around the end of each month we break down the bulk delivery into individual parcels then drop them off to the distributors.

Perhaps you have an estate car or van and would like to volunteer as a driver?

We need to increase our team so this doesn't become a burden on any one person. A team of two from an available group of four people makes this an enjoyable and sociable task.

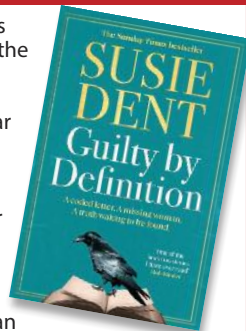
If you want to know more give me a call. Martin Hayden

077 96 335 661



BOOK REVIEWS

When an anonymous letter is delivered to the Clarendon English Dictionary office, it becomes rapidly clear that this is not the usual word-related enquiry. Instead, the letter hints at sinister events linked to a particular year.



For editor Martha Thornhill, the date can mean only one thing: the summer her brilliant older sister Charlie went missing. Ten years on, Martha and her family are no closer to unravelling the mystery of Charlie's disappearance – until now.

As more letters arrive, Martha and her team follow the linguistic clues to a troubling truth. It seems Charlie was keeping a powerful secret, and that someone is desperate to keep it well and truly buried.

Guilty by Definition is a love letter not only to language but to the city of Oxford, wrapped within an intriguing mystery of a missing woman and considering the emotional aftershocks of her disappearance on those left behind.



Summer 1914. A world on the brink of catastrophe.

In London, 26-year-old Venetia Stanley – aristocratic, clever, bored, reckless – is having a love affair with the Prime Minister, H. H. Asquith, a man more than twice her age. He writes to her obsessively, sharing the most sensitive

matters of state.

As Asquith reluctantly leads the country into war with Germany, a young intelligence officer is assigned to investigate a leak of top secret documents – and suddenly what was a sexual intrigue becomes a matter of national security that will alter the course of political history.

Seamlessly weaving fact and fiction in a way that no writer does better, **Precipice** is the thrilling new novel from Robert Harris, the author of *Conclave*.



Summer Vibes

Get into those summer vibes with

EATON BRAY PARISH COUNCIL

Picnic in the Park

with The Heath Band

School Lane Recreation Ground

Sunday 24th August 2025

3pm – 4:45pm

(15-min interval at 3:45pm)



Bring your own picnic

Sit back and enjoy the music from the Heath Band

The perfect way to enjoy a
summer bank holiday weekend

Portaloos (accessible to all) will be available

Located: School Lane car park

(event subject to weather conditions)

village and country estate agents
Sears & Co



villageandcountry@searsandco.co.uk
01525 657330 | www.searsandco.co.uk
65 Moor End, Edlesborough, LU6 2HN

NMJ Service Centre

AIRCON

AIRCON REGAS TO KEEP YOUR
CAR COOL AND YOUR
WINDOWS DEMISTED

SERVICING

ALL MAKES AND MODELS
SERVICED

REPAIRS

ALL MAKES AND MODELS
REPAIRED

DIAGNOSTICS

DIAGNOSTICS CARRIED OUT
USING THE LATEST
ELECTRONIC EQUIPMENT

MOT



All Makes and Sizes of
Tyres Supplied and Fitted

4 Wheel
Alignment

Collection and Delivery Service
available on Request

Loan Cars
Available on Request

MOT

WWW.NMJSERVICECENTRE.CO.UK

NMJ SERVICE CENTRE
PEBBLEMOOR, EDLESBOROUGH
BUCKS LU6 2HZ
01525 222224



YEARDYE
LUXURY BATHROOMS

Installation Specialists

A FAMILY RUN
BUSINESS FOR
OVER 30 YEARS

Call **07872 328590**

✉ info@yeardyeluxurybathrooms.com

🌐 www.yeardyeluxurybathrooms.co.uk





BRAISED PORK WITH PLUMS (SERVES 8)

about 1.6kg/3lb 8oz porkshoulder

5 tbsp rice wine

5 tbsp light soy saucefor flavour,
1 tbsp dark for colour

generous thumb-size piece fresh root ginger

5 garlic cloves

1 red chillideseeded and finely chopped

2 tbsp vegetable oil

bunch spring onionsfinely sliced

2 star anise

1 ½ tsp five-spicepowder

1 cinnamon stick

2 tbsp sugarany type

1 tbsp tomato purée

500ml chicken stock

6 ripe plumshalved and stoned

Step 1 Cut the pork into big pieces about the length of your thumb and twice as wide. Put into a bowl or food bag, and add the wine, soy sauces, half the ginger, half the garlic and half the chilli. Marinate for at least 1 hr or up to 24 hrs.

Step 2 Heat oven to 160C/140C fan/gas 3, then heat the oil in a large casserole. Tip in half the spring onions, remaining ginger and garlic, the star anise, five-spice powder and cinnamon. Fry gently until fragrant and soft. Stir in the sugar, turn up the heat, then lift the pork from the marinade and turn in the oniony mix for about 3 mins until the meat is just sealed but not browned. Tip in the marinade, tomato purée and stock, give it a stir, cover, then braise in the oven for 2 hrs.

Step 3 After the first hr is up, add the plums to the pan. Take the lid off and carry on the cooking, uncovered. The meat should be completely tender, turning golden brown where it breaks the surface of the sauce. Spoon off any excess fat from the surface, then scoop the meat and plums carefully from the pan with a slotted spoon. Turn up the heat and boil the sauce for 5-10 mins until reduced and slightly syrupy. Return everything to the pan, gently warm through, then scatter the rest of the spring onions over the top to serve.



Dunstable Probud Club

Dunstable PROBUS Club meets on the second Monday of the month at Tilsworth Golf Centre and membership is open to retired or semi-retired professional and business people.

The Club's main purpose is the promotion of good fellowship. Members enjoy some social activities and the occasional organised visit throughout the year and after their regular monthly lunch meetings are entertained by speakers who give talks on a wide range of topics.

If you are interested in joining the Club, please contact the Secretary, Philip Savage on 01582 662462.



BIRDS OF BRAY NEWSPAPERS WANTED REGULARLY

Please call **Chris or Sue Mitchell** on
01525 221128 who can collect.
Answer machine in use if unavailable.



DANESBOROUGH CHORUS NEW SINGERS WELCOME

If just listening to Mozart is said to supercharge your brainpower, just imagine what you might be capable of if you also **sing** Mozart with the Danesborough Chorus...

Even if you have little or no experience in choral singing, you can be sure of a warm welcome as well as a boost to your mental and physical well-being.

We're a leading amateur choir in the local area, singing a range of classical music from Bach to Karl Jenkins, and even occasionally tackling the Blues! Our Musical Director Ian Smith has been conducting choirs of all ages in the area for almost 50 years, so he knows how to get the best out of the 100 singers.

Choir members come in all shapes and sizes, all ages, and from various jobs and retirement. They know the health benefits of singing in a group which is scientifically proven to reduce stress, fight depression and decrease blood pressure. It's also great fun to sing together, and an easy way to make new friends.

Why not try it for yourself and experience that joyful feeling? We're recruiting now for our 51st Season starting on Wednesday 3rd September in Aspley Guise Village Hall when rehearsals commence for Verdi's Requiem.

Please contact our membership secretary, Amanda Owen, at
admin@daneshorough.org.uk

or visit www.daneshorough.org.uk
for more information.

Author: **Judy Barker**

REHERSALS

Aspley Guise Village Hall MK17 8JH

TIME

Wednesday evenings at 19.45 - 21.50

EMAIL FOR INFO

dcmembershipsec@gmail.com

Danesborough Chorus reg. charity 1188026
www.daneshorough.org.uk



Castles

Multi-award winning
castlesestateagents.co.uk

Selling or letting your property?

We'll help you achieve a premium price. It's what we do best.

Book a **FREE** valuation online,
call or visit your nearest branch.

Over
30 years

local property
experience

Eaton Bray

01525 220605

Berkhamsted

01442 865252

Kings Langley

01923 936900

Boxmoor

01442 233345

Prestige

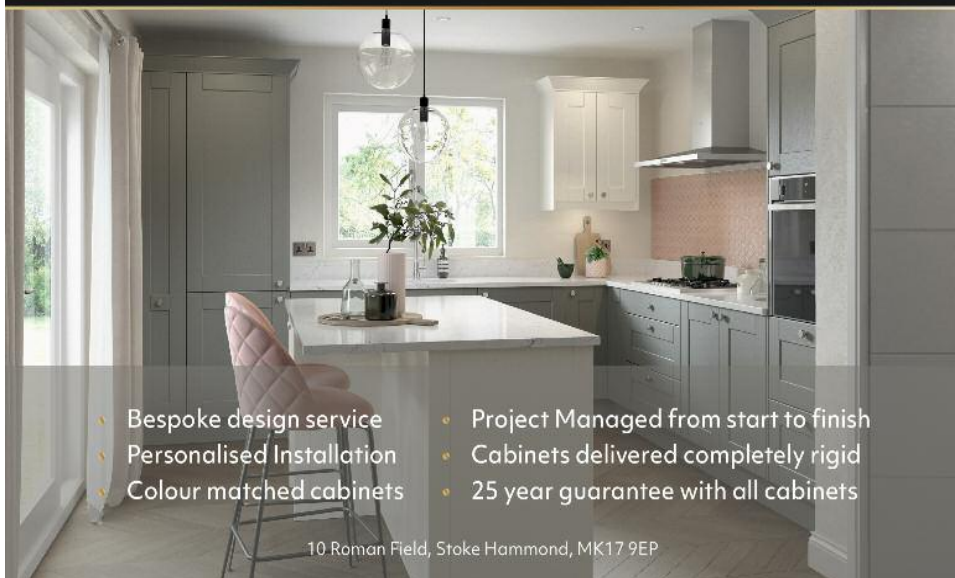
KITCHENS



☎ 07720 374254
@ info@prestigekitchens.co.uk
🌐 www.prestigekitchens.co.uk



We are a bespoke kitchen specialist located in Buckinghamshire. Offering a complete service with tailored kitchen design, timings and project management to suit your budget, space and lifestyle.



- Bespoke design service
- Personalised Installation
- Colour matched cabinets
- Project Managed from start to finish
- Cabinets delivered completely rigid
- 25 year guarantee with all cabinets

10 Roman Field, Stoke Hammond, MK17 9EP

Totternhoe GARDEN CLUB

Our second visit of the year was to Leeds Castle on 9th July

Amazingly it was a very straightforward journey and we arrived by 11 a.m.

Leeds Castle is a castle in Kent, England, 7 miles southeast of Maidstone. It is built on islands in a lake formed by the River Len to the east of the village of Leeds and is a historic Grade I listed estate.

A castle has existed on the site since 857. In the 13th century, it came into the hands of King Edward I, for whom it became a favourite residence; in the 16th century, Henry VIII used it as a dwelling for his first wife, Catherine of Aragon.

The present castle dates mostly from the early 19th century. Its last private owner, Olive, Lady Baillie, left the castle in trust to open it to the public. It has been open since 1976 and is definitely worth a visit.



There is a mobility bus from the visitor centre to a point closer to the Castle for those with walking difficulties. There is also Elsie the Land Train (cost £1.50) or the Black Swan ferry for the same price which can take you across The Great Water to the area where there is the Birds of Prey Centre, Adventure Golf, Beach, maze and grotto.

For more information about the Garden Club, e-mail **Joyce Murphy** at tgc@mothermurphy.co.uk or telephone **01582 667085**.

For membership queries contact **Veronica Clarke** by e-mail at r_vclarke@hotmail.com or telephone **01582 600764**. At the moment we have reached our limit of 130 members, but Veronica will be pleased to take your details and put you on the waiting list to join.

Margaret Jones - Secretary



EDLESBOROUGH WI

theWI

After the business part of the evening, including minutes, notices of upcoming events, birthday cards and posies distributed, it was time to welcome our speaker!

She was a local girl, Anna Conti, who grew up in the area, was educated in Leighton, followed by university in London! She explained her early enthusiasm was for collecting glass bottles, and had over 360 at one time!

Such a busy girl, Anna runs her own stained glass business from home, and we had to wait a long time to secure her presentation! However she was certainly well worth waiting for!

She took us through the variety of her portfolio, the commissions she undertakes both domestically, for religious buildings, schools and private and public authorities!

She has even appeared on TV, but managed to be upstaged by her mother chatting up the celebrity chef, Raymond Blanc! One of her early commissions was for Richard Branson!

Apart from explaining how she produces and fits the final article, she also made a presentation of her bright and colourful portfolio.

She brought some examples of her work for purchase and there was soon a queue of eager ladies!

Our evening ended with refreshments, lively chatter, and expectation for our next event which is lunch at Edlesborough pavilion in a couple of weeks!

In the past I have spoken of one of the features of our WI being Fun, Friendship, Food, and Flowers, and once again last night didn't disappoint!

We meet on 2nd Tuesday of the month, at 7.30 pm, in the village hall, and new members are always welcome, so do come and join us and our varied programme of events!

Jacky Hockey

INSPIRING WOMEN



Share your experiences, problems and solutions with all things technical by

Joining our *WhatsApp* Group or our private Pavilion IT Help and Support Group on *Facebook* or by email

pavilionithelp@gmail.com

or further meetings at the Pavilion if requested

**Steve Munday ~ 07740 197392
Christine Hurst ~ 07398 246496**

HELPFUL TIPS ON FINANCE

Back-to-School Financial Prep

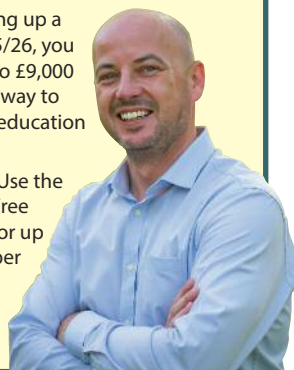
With school uniforms, tech, lunches, and club fees to budget for, August can hit families hard. But a bit of planning can help ease the pressure.

Firstly, review your eligibility for **Tax-Free Childcare**, which gives you up to £2,000 per child per year towards approved childcare (including after-school clubs) if you're working and earning under £100,000 per parent.

Also, consider setting up a Junior ISA. For 2025/26, you can contribute up to £9,000 tax-free. It's a great way to save long-term for education or future needs.

Tip of the Month: Use the government's Tax-Free Childcare scheme for up to £2,000 support per child each year.

Daniel Riley
(Riley Accountants)





JAMES DUFFY
KITCHENS & BATHROOMS
SUPPLIED AND FITTED
07590 998977

Laptop & Computer

Server, Printer, Apple, Setup, Repairs,
Data recovery, Internet, Wireless, Network,
Virus infection, Home/Office computer problems.
Services from £40.
Your local IT support, 7 days services, we visit you
No Fix - No Fee
Qualified, Experienced
PClaprepairs@gmail.com
01525 306316 – 07925 338435



The Fly-By
Café
@ The London Gliding Club
Open 8:30am-2pm
Stunning views of the Downs & Airfield
Tring Road, Dunstable, Beds, LU6 2JP
tel: 07886 226354 www.thefly-bycafe.co.uk
email: kelly@thefly-bycafe.co.uk

**Breakfast
Lunch
Tea
Coffee
Snacks**



MEGAN CROSS
PROFESSIONAL DOG GROOMER

Quiet 1-2-1 dog grooming salon based in
Edlesborough

Fully Qualified	Fully Insured	Canine First aid Trained	8+ Years of Experience
--------------------	------------------	-----------------------------	---------------------------

Tel- 07519837334
Email- info@megancrossgrooming.co.uk
www.megancrossgrooming.co.uk

Come for Coffee at St Mary's, Eaton Bray

For a warm welcome
and a cheering cuppa
each month in
St Mary's Church
Eaton Bray
10.30am - midday



**1st Saturday of each month
(except July - 2nd Saturday)**



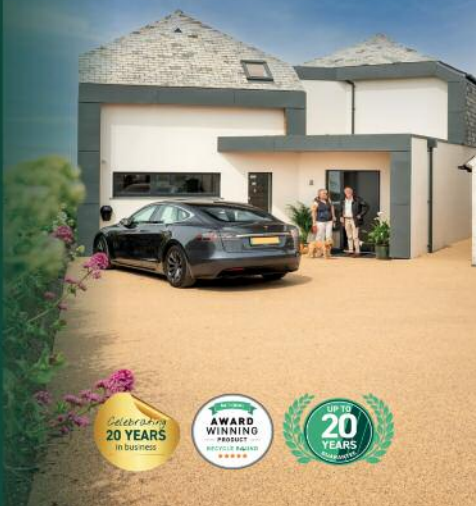
Leading sustainable resin driveways

As a resin bound driveway specialist, we're dedicated to providing outstanding service from consultation to completion and beyond. All Oltco customers have the added benefit of outstanding aftercare, and with up to 20 years guarantee we're sure that our resin bound driveways will exceed expectations for years to come.

Get in touch today for an instant quote or a free site visit

01582 858359 | info@oltco.co.uk

Find out more!



St Mary's Pastoral Group invites you to a **Funeral Forethought Forum**

St Mary's Church Eaton Bray
Saturday 11th October
10am -12 noon

No booking required.

Drinks and biscuits provided.

Workshop to explore

Issues and options surrounding funeral planning within a supportive and informal group.

Offering practical advice and an opportunity to record your thoughts.

**Your local ROTARY CLUB
wants you**

Rotary



To join us at **Tilsworth Golf Centre** on Thursday evenings from 6.45pm for a meal usually followed by an interesting speaker. We are presently seeking new members

So if you are... outgoing, friendly and of good standing in your community, enjoy social events and the company of others, also willing to join in with and assist the club in its aims and its support for charitable causes,

then perhaps ROTARY is the organisation for YOU.

To find out more and/or arrange to attend a trial meeting or two, please call our Membership Secretary

01525 223004



Friend of Bucks



AGE
Concern

**AGE CONCERN
NORTHALL & DISTRICT**

A GREAT LOCAL CAUSE

Enjoy our

HARVEST FESTIVAL AUCTION

WITH PROFESSIONAL AUCTIONEER

AT

THE SWAN NORTHALL

Friday 3rd October 2025

ENTRANCE FREE

Viewing from 7.30pm

**Followed at 8pm by
THE HARVEST AUCTION**





**RED KITE
AUTOSERVICES**
FOR ALL YOUR VEHICLE NEEDS

NO JOB TOO BIG NO JOB TOO SMALL

For estimates or advice on anything from
a bulb to a timing belt, servicing, clutch,
suspension, brakes, MOT welding and more

Message Steve on:

01525 221681 or 07950 843864

MOTs arranged and free collection and delivery

Edlesborough Baptist Church

**All are welcome to our 11am service
every Sunday**

Keep up to date by visiting:

**[www.edlesboroughbaptist.wix.com/
home](http://www.edlesboroughbaptist.wix.com/home)**

Find us on Facebook @gbce2014

EATON BRAY WI

theWI

At our July meeting we were delighted to be entertained by the Ohana Ukulele Band. It was lovely to see everyone singing their hearts out to a delightful mix of songs from several eras including Rock and roll, Roll out the barrow, Lets Twist Again and Sweet Caroline.

At our next meeting on Monday 4th August we are looking forward to a talk on Pitstone Museum by Ronnie Farrer and in September we will be holding our Harvest Supper.

Our Charity for this year has been Homestart and in September we will be having a Bring and Buy to raise some more funds.

Eaton Bray WI meets at the Methodist Church Hall, Totternhoe Road, Eaton Bray at 7.30pm on the first Monday of each Month and ladies of all ages are most welcome. If you are interested in joining our WI please contact

Sue Tucker on **07772901816** or

Margaret Jones on **07478 061156**

INSPIRING WOMEN

APPLEDOWN RESCUE DOG OF THE MONTH



Beautiful **Sandy** is a medium size crossbreed who is approximately two and a half years old. She came to us as a stray and we were amazed that nobody claimed her because she

is such a lovely affectionate girl! Sandy can be a little strong on the lead at first because she is so happy to be out and about, but she soon calms down. We think she would adore to be at the heart of an active family who will give her the company and exercise she needs. Sandy could probably live with another dog pending introductions. Any children would need to be 7+. Please visit our website for details about adoption and an application form. To support our work you can make a one-off donation of £3 by texting APPLE to 70111, or donate via Paypal using the 'DONATE Support a Cause' option. Cheques are very welcome too!

Appledown Rescue & Rehoming Kennels
Harling Road, Eaton Bray, Beds LU6 1QY

01525 220383 (10am-1pm & 2-4 pm)

Email: appledown.kennels@btinternet.com

Website: www.appledownrescue.co.uk

Viewings are by appointment only



BARBER TIME

GROOMING ROOM



OPENING HOURS

MONDAY TO FRIDAY 9AM - 6.30PM - TUESDAY CLOSED

SATURDAY 9AM - 6PM | SUNDAY 10AM - 4PM

OPEN ON BANK HOLIDAYS - NO APPOINTMENT NECESSARY



barbertime_edlesborough

3 SUMMERLEYS, EDLESBOROUGH, LU6 2HR

DESIGN & PRINT BY WWW.MIDLAND.CO.UK 11020 8807 1302



MY RUN

Secure dog field

We have six fully fenced fields located in Woodside, Eaton Bray, Stewkley, Ridgmont, Ashley Green & Kempston. Offering owners a safe & secure environment for dogs to run freely & play.

The areas are perfect for practicing training & recall or anybody just looking to have some off the lead fun with their dogs.

Only one booking is possible for each time slot so you will have exclusive use of the area meaning it is also suitable for nervous & antisocial dogs.



To book your session TODAY visit www.mydogrun.co.uk

For further information please call 01525 591061 or Email: info@mydogrun.co.uk



Parties Wedding Receptions Stage Productions

Fitness Classes Business Meetings Beer Festivals

Film Shows Club Meetings Keep Fit Quiz Nights

Eaton Bray Village Hall

Capacity for 220 People Parking for 70 Cars Meeting Room Countryside Views

Bar Facilities Kitchen Facilities Full AV Facilities Baby Changing Wheelchair Access



For bookings or enquiries call: 07975 797 202

email: bookings@ebvh.co.uk

www.ebvh.co.uk





With the kids on holiday, enjoy the garden as a family!

The last official month of summer is the perfect time to enjoy your garden while it's still at its best. Children are on school holiday, lawns are in full use, and there's plenty of delicious fruit and veg to fill your dinner plate.

For this month's planting advice, have a look at our what to sow and grow in August page. In the meantime, see our guide below for all the jobs to keep on top of:

Timely Tips



Don't forget your hanging baskets during the hot weather

August isn't the time to take your eye off the ball in the garden. Here are some of the main jobs:

- 1 Top up ponds and bird baths regularly.
- 2 Water fruit and veg plants daily.
- 3 Prune all summer flowering shrubs, such as climbing hydrangeas, once the blooms are finished.
- 4 Keep on top of weeds as they compete with your crops for nutrients and water.

In the flower garden



Ensure top-heavy dahlias are staked to prevent damage

- Water **evergreen shrubs** like camellias and rhododendrons thoroughly this month to make sure that next year's buds develop well.
- Keep patio container plants well watered and feed with a **liquid fertiliser** every fortnight.

- Stake tall or top-heavy **dahlias** and **lilies** to prevent wind and rain damage. Dead-head lilies for a better flower display next year.
- Dead-head **annual bedding plants** and **perennials** to encourage them to flower into the autumn and stop them self-seeding.
- Cut back faded perennials to keep borders tidy.
- As penstemon flowers fade, cut them back to just above a leaf to encourage more flowers.
- Cut back **herbs** now to encourage a new flush of tasty leaves you can harvest before the frost.
- **Prune wisteria** after flowering by removing all the whippy side-shoots from the main branch framework to about 20cm from their base (about five leaves from the main stem).
- Trim any **lavender plants** after they've finished flowering to keep them compact.
- Collect ripened seeds and store them for next year. Leaving some seed heads in place can be attractive and allows the plant to self-seed in the surrounding soil.
- Mow meadows now to help scatter established **wildflower seeds**.
- Take cuttings of your favourite tender perennials such as **pelargoniums** and **fuchsia** to propagate them for next year.
- Finish dividing clumps of bearded Iris now so they have time to form roots and flower buds for next year before the cold weather arrives.
- Prune **climbing roses** and rambling roses once they've finished flowering (unless they're repeat-flowerers in which case leave them).
- Spray ground elder (and other perennial weeds) with a glyphosate-based **weedkiller**, the plants now have plenty of leaf surface area with which to absorb it.
- Look out for symptoms of 'clematis wilt' including black discolouration on the leaves and stems of your clematis. Cut out any infected plant material and dispose of it in your household waste.

Looking after your lawn



- Don't worry if your lawn is looking brown, the autumn rains will soon make it green again.
- Don't feed your lawn with a **high-nitrogen fertiliser** now as this will encourage lots of lush new growth which is easily damaged by autumn weather.
- Lawn growth slows down in late summer so raise the cutting height of your **lawn mower** to help the grass cope.
- If you're planning on laying a new lawn this autumn, prepare the area now to give it time to settle.
- Recut any **lawn edges**. Install lawn edging to make future maintenance easier.
- If your lawn is infested by ants, brush out the nests on a dry day. Always brush them away before mowing.

How safe is your luggage when you check it in?

Have you ever wondered what happens to your luggage when you take a flight to go on holiday and check in?

Many questions and causes for concern can pop up too. Will it reach my destination? What happens if it gets lost or damaged.

What happens to your luggage at the airport?

At check-in, the traveller will weigh the item and the check-in agent will print a label which contains information on the traveller, the flight number, and departure and arrival airport codes.

It then goes on a conveyor belt where baggage handlers will inspect the items for security purposes and redirect them to the correct flight once cleared.

Once loaded onto the plane, they are stored securely in the hold which the passenger cannot access. On landing, they are unloaded from the hold, driven to the terminal, and unloaded onto conveyor belts which will emerge at the baggage reclaim section.

If a journey involves a connecting flight that doesn't involve going through customs and re-entering airspace through security, your baggage will be transferred to the next aircraft. However, for long international layovers, you may be temporarily reunited with your luggage before checking it back in for the next leg of the journey.

Why and how do items get lost?

Airport staff process so many checked items a day, meaning there's always room for error.

Checked items often get lost during flight connections and this can be the result of either mislabelling at the check-in desk, or a lack of time to transfer the baggage at the connecting airport.

While human error is the most likely cause, even a label falling off from the journey between check-in and collection can cause bags to go missing in transit. At this point, baggage handlers leave no stone unturned looking for clues to associate the item to its owner.

How is luggage treated?

Baggage handlers work hard to get luggage from A to B as quickly as they can and often have to work fast to ensure bags make their all-important connections.

Though highly uncommon, baggage can sometimes be damaged in the process, particularly hard-shell luggage with a thin casing, or luggage with handles left up or attachments that can get caught in machines.

It is recommended that all luggage is folded away properly, so handles, flaps and attachments don't get caught and broken while passing through the airport.

Try wrapping up your valuables or fragile items in pieces of clothes within your suitcase to add extra cushioning. For travellers embarking on a backpacking adventure, you may have to register your backpack with 'oversized bags'.

This shouldn't incur an extra fee, so long as the dimensions fit with the airline's rules; this is to ensure any backpack buckles or straps don't become caught within the airport's travelators and cause a jam, and these items are instead loaded onto the aircraft by hand.

What should you do if it happens to you?

If luggage is damaged or missing, travellers should always notify the airline or the airline's handling agent before leaving the airport.

Travellers should also contact their travel insurance provider. Flight Centre recently launched Captain's Pack, a range of benefits essential to hassle-free travel that offer peace of mind – the lost luggage tracking and cover is undoubtedly the most popular add-on among our customers travelling long-haul, or with connections.

Is luggage all treated the same, or do priority seats or airlines receive different treatment? All that insider stuff we'd love to know and ask directly, how safe is your luggage when you check it in?

When travelling internationally, all luggage passes through security and into the belly of the airport to be processed and sent to the correct aircraft. Here, baggage handlers and some machines process the luggage.

For those travellers with airline membership status and/or flying in premium cabins, their luggage is prioritised and tends to be offloaded from the aircraft first, meaning speedy pick-up once at your destination.

Happy holidays!



You are warmly invited to:

A Farewell Service for Rev Nigel Bibbings

Nigel is retiring after serving as minister for 9 years in the
South Beds Methodist Circuit

Venue: Eaton Bray Methodist Church

Date 3rd August 2025

Time: 4pm



Please join us afterwards for refreshments in the school room

**A warm invitation to join the churches of Eaton
Bray, Dagnall, Edlesborough and Northall at**

Hymns of Praise on Edlesborough Green

Led By The Salvation Army Band

Bring Your Garden Chairs and Picnic Rugs

Sunday 10th August at 3pm



All Very Welcome



Friend of Bucks



AGE CONCERN NORTHALL & DISTRICT

Wednesday Club

AGE
Concern

We are looking for **volunteer drivers** and **conductors** to help with transporting the members to and from their homes on our minibus. This would be on a rota system, depending on the number of volunteers.

CALL 07854 230243 IF YOU CAN HELP



**EATON BRAY
TC
SUMMER
TENNIS CAMP**

LTA QUALIFIED COACH

ALL ABILITIES WELCOME

Contact Head Coach Sara Bamford on 07561571578

Tuesday 5th – Friday 8th August 2025

Eaton Bray Tennis Club, School Lane LU6 2DT

SESSION 1:	SESSION 2:	FULL WEEK:
1-3pm	3-5pm	£56
AGE 4-11 YEARS	Age 12-18 years	Discounts available

To book:
www.clubspark.lta.org.uk/eatonbraylawntennisclub/Coaching/Camps

Advertisers Index

A McClelland Pest Control	23	Julia Reading Chiropody	19
Absolutely Plastered	30	Lee Hutt Heating & Plumbing	19
Anderson Domestic Repair Service	23	Local Gutterbuster	46
Anne Johnson Osteopath	15	M.J.Broughton Decorating	15
ARC Contract Services Ltd	34	Megan Cross Dog Grooming	62
Aspect Electrical	26	My Dog Run	67
Aspley Flooring	11	N.D.S General Building & Plumbing	15
Barber Time	66	Neil Hodson Structural Engineering	18
Cafe Masala	27	NG Autos Vehicle Repairs	31
Castles Estate Agents	58	Nimby Pest Control	34
CDM Builders Ltd	43	NMJ Motorhouse Vehicle Repairs	55
Charles Hill Garden Services Ltd	34	OLTCO Resin Driveways	63
Charlotte Lyons Physiotherapy	43	P. Dyer Electrical	19
Coffee Tavern	12	Pampered Pups Dog Grooming	31
Computamation Services Ltd	14	Paramount Plumbing & Heating	50
Dagnall School	46	Patricia's Cuisine	15
Deep Clean	15	PC Laptop Repairs	62
DM Security	22	Pinstripes Signs & Advertising	23
Dominic Woolcott Decorator	18	Premier Garage Doors	75
Duncan Tomblin Tree Surgeon	23	Prestige Kitchens	59
Eaton Bray Academy	26	Quality Glazing	27
Eaton Bray Cricket Club	48	Red Lion Pub & Restaurant	2
Eaton Bray Dairy	43	Redkite Vehicle Repairs	65
Eaton Bray Tennis Club	48	Repair Cafe	10
Eaton Bray Village Hall	67	Sears & Co Estate Agents	54
Edlesborough Cricket Club	32	SM Reilly & Sons Ltd Builders	22
Edlesborough Primary Academy	47	Spinney Landscapes	19
Edlesborough Tennis Club	42	St Judes Therapeutic Pilates	34
Floss and Smile Dentist	14	Stephen Janes Carpenter & Joiner	27
Fly-by Cafe	62	Steve the Mower Man	22
GBR Construction Ltd	32	Stoten Gillam Ltd Accountants	34
G & J Groundwork & Landscapes	22	Toddington Financial Advice	30
Gentleman Gardener	31	Toni's Tootsies Foot Health	22
Greenfingers	15	Travel Impressions	2
James Duffy Kitchen & Bathroom Fitter	62	Unicorn Windows	11
James Falcon-Cross Landscaping	27	Watermill Weddings (Bellows Mill)	43
Janes Electrical & Carpet Shop	76	Westrope Butchery	47
Jazzercise	44	Will Kimberley Garden Services	22
JoAnn Latus School of Dance	31	Yardye Luxury Bathrooms	55



As we take time over the next few months to recharge, refresh and restore, here is a little reminder, with everything that is going on, not just in our communities but in the world, of how we should respond like Jesus.

People are often unreasonable and self-centred

FORGIVE THEM ANYWAY

If you are kind, people may accuse you of ulterior motives

BE KIND ANYWAY

If you are honest, people may cheat on you

BE HONEST ANYWAY

If you find happiness, people may be jealous

BE HAPPY ANYWAY

The good you do may be forgotten

DO GOOD ANYWAY

Give the world your best and it may never be enough

GIVE YOUR BEST ANYWAY

For you see, in the end it's between **YOU AND GOD** - it was never between you and them anyway!

May you all have a blessed and refreshing summer break.

Jacqueline

(The Eaton Bray Salvation Army Church Leader)

The Salvation Army

Booth Place, Eaton Bray, LU6 2DR

Sunday Worship: Sun 11am – 12pm

(weekly – worship for all ages followed by tea/coffee/squash, biscuits & a chat)

Coffee Morning: Tues 10am – 12pm

(fortnightly – including homemade cakes & preserves to purchase, as well as a bric-a-brac stall)

Home League: Weds 2:30pm – 3:30pm

(weekly – fellowship & activities including singing, quizzes, arts & crafts, bible thought & a prayer – predominantly for women although gentlemen are very welcome)

Champion's Club: Weds 6:15pm – 7:15pm

(2nd, 3rd, 4th & 5th Weds of the month, Age 5+, term time only – lots of fun including games, music, activities & bible stories)

Messy Church: Weds 6pm – 7:15pm

(1st Weds of the month, term time only – a fun time for the whole family to explore bible stories through arts & crafts, & messy activities)

Girls' Night Out: Thurs 7:30pm

(1st Thurs of the month – for more details including where we meet & what we do each month, email eaton.bray@salvationarmy.org.uk)



For further information please call into our hall at any of the times above, telephone: 07796 980565 or contact us by email: eaton.bray@salvationarmy.org.uk

Premier

Garage Doors & Gates

Call for your free quote: 01525 220212

UNIT 7, SPARROWHALL BUSINESS PARK, LEIGHTON RD,

EDLESBOROUGH, LU6 2ES

E-mail: sales@premiergaragedoors.co.uk

Web: www.premiergaragedoors.co.uk

Check out our  reviews to see what our customers have to say!



**WE HAVE A WIDE RANGE OF DOORS
AVAILABLE TO VIEW IN OUR SHOWROOM:**

- * UP AND OVER
- * SIDE HINGED
- * ROLLER SHUTTER
- * SECTIONAL

**WE CAN ALSO HELP WITH REPAIRS,
SERVICING AND AUTOMATION**



**SPECTACULAR
GARAGE DOORS FROM
LOCAL SPECIALISTS**

**CALL TODAY TO
ARRANGE A FREE NO
OBLIGATION
QUOTATION SURVEY
WITH ONE OF OUR
EXPERTS**



Electrical and Appliance Services

Trusted advice, local service, and reliable aftercare
from a dedicated in-house team.

As a Euronics Agent, we offer access to competitive prices on top brands – we can even price match*

Everything from washing machines to kettle

Delivery & Installation

Aftercare & Maintenance Advice

Trusted Local Experts

Servicing for lawnmowers, bikes and appliances

JANES



 **euronics**
the home of electricals

4 - 6 High Street, Edlesborough, LU6 2HS

01525 220208 | info@janesltd.co.uk | www.janesltd.co.uk